

DESCRIPTION AND OPERATION

Front Disc Brake

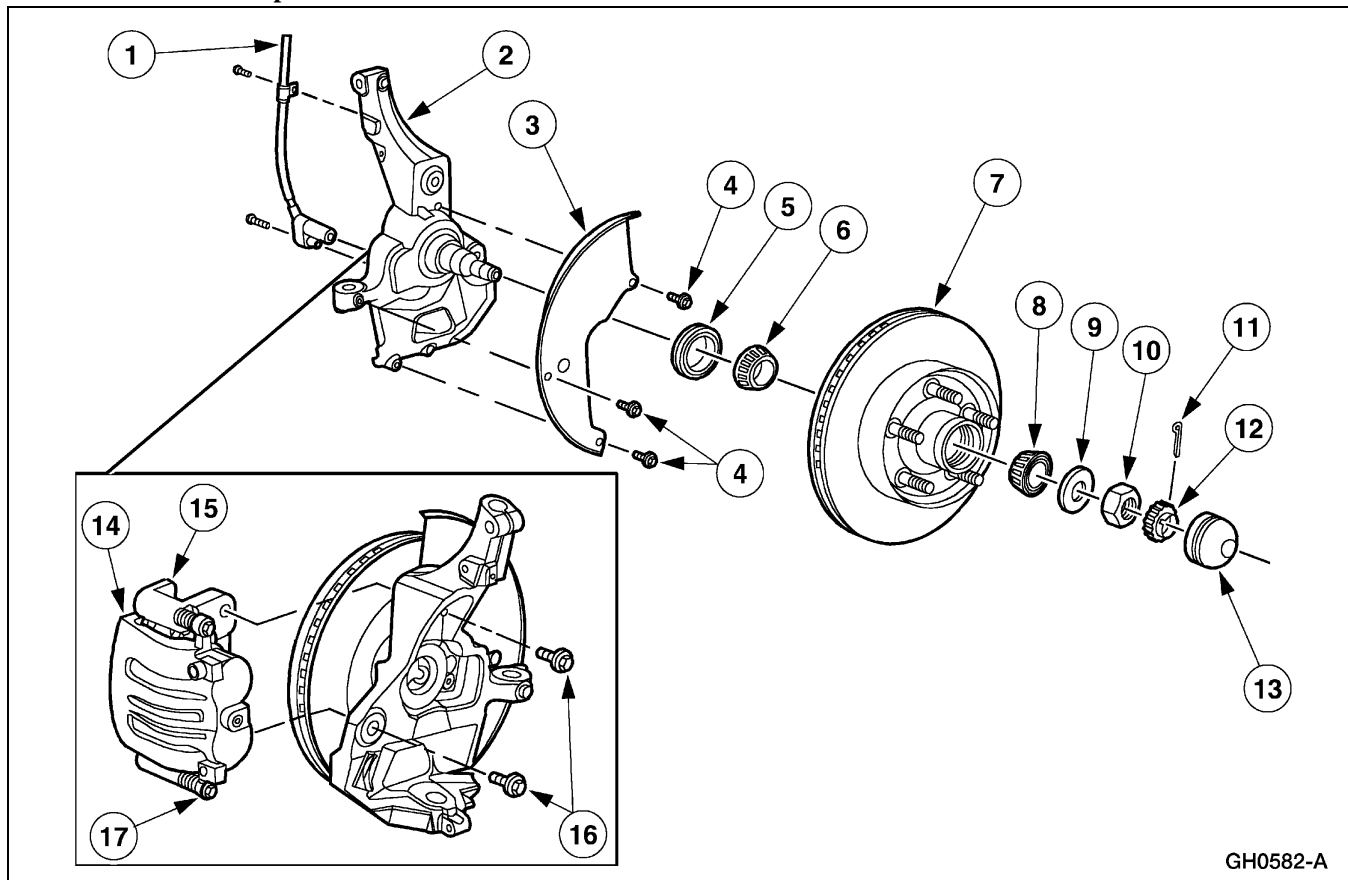
⚠ WARNING: Asbestos fiber dust may be present on brake and clutch assemblies and is hazardous to health if inhaled.

Brake and clutch assemblies should be cleaned using a vacuum cleaner recommended for use with asbestos fibers such as a brake/clutch/service vacuum. The bag must be labeled per OSHA instructions, sealed, and the trash hauler notified as to the bag's contents.

If a vacuum suitable for asbestos is not available, cleaning should be done wet. If dust generation is still possible, technicians should wear government-approved toxic dust purifying respirators.

Occupational health and safety act (OSHA) requires areas where asbestos dust generation is possible to be isolated and posted with warning signs. Only technicians performing brake or clutch repair should be present in the area.

Front Disc Brake Components — 4x2

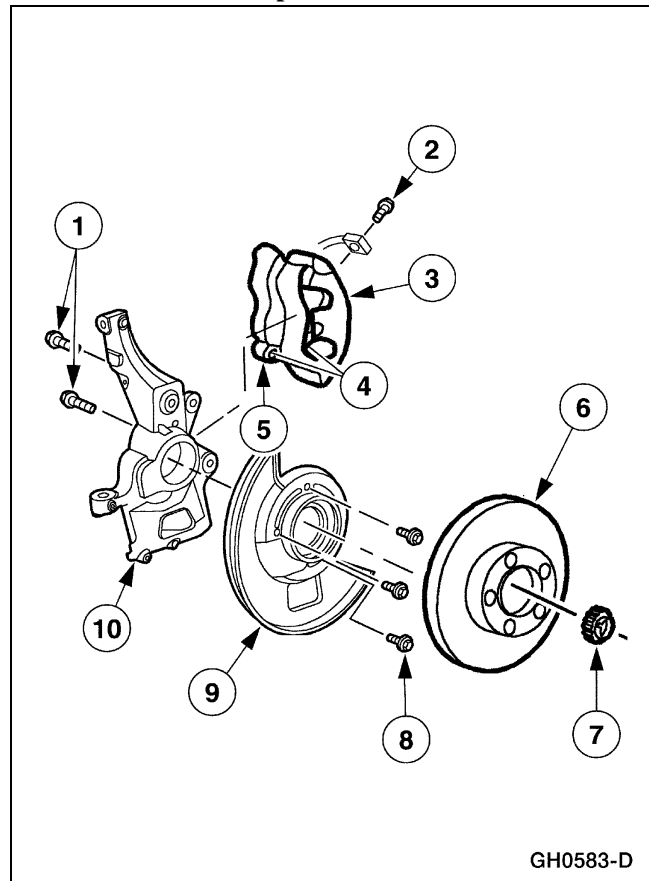


GH0582-A

DESCRIPTION AND OPERATION (Continued)

Item	Part Number	Description
1	2C204	Front brake anti-lock sensor
2	3105/3106	Front wheel spindle (LH/RH)
3	2K004/2K005	Brake disc shield (LH/RH)
4	N611171-S2	Bolt
5	1190	Grease seal
6	1216	Front wheel bearing
7	1102	Brake disc and hub
8	1216	Front wheel bearing
9	1195	Front wheel outer bearing retainer washer
10	374504-S36	Hub spindle nut
11	N642569-S	Cotter pin
12	390622-S	Nut retainer
13	1131	Hub grease cap
14	2B120	Disc brake caliper
15	2B292	Front disc brake caliper anchor plate
16	N805163-S190	Caliper anchor plate bolt
17	2N386	Disc brake caliper bolts

Front Disc Brake Components — 4x4



GH0583-D

Item	Part Number	Description
1	N805163-190	Front disc brake caliper anchor plate bolt (2 req'd)
2	N808236-S36	Front brake hose bolt
3	2B120	Disc brake caliper
4	2001	Pads
5	2B292	Front disc brake caliper anchor plate
6	1125	Brake disc
7	3B477	Front axle wheel hub retainer
8	N611171-S2	Bolt (3 req'd)
9	2K005	Brake disc shield
10	3K186	Front wheel knuckle

On two-wheel drive vehicles:

- The brake caliper (2B120) bolts to the front wheel spindles (3105).
- The brake disc and hub (1102) is an integrally cast assembly.

DESCRIPTION AND OPERATION (Continued)

On 4x4 vehicles:

- The front disc brake caliper (2B121) bolts to the front wheel knuckle (3K186).
- A separate brake disc (1125) attaches to the wheel hub (1104).

The front disc brake caliper:

- is a pin slider, dual piston type.
- has two caliper pistons (2196).

The caliper has a fluid inlet at the center of the housing. A square section seal fitted into an annular groove in the caliper cylinder bore seals against hydraulic pressure, while rubber boots seal the caliper pistons and caliper bore from contamination.

The brake disc shield (2K005):

- bolts to the front wheel spindle.
- protects the bearings and inboard surface of the brake disc.

The pads are:

- contained within the front disc brake caliper anchor plate (2B292).
- held to the front disc brake caliper anchor plate abutments by disc brake anti-rattle clips.