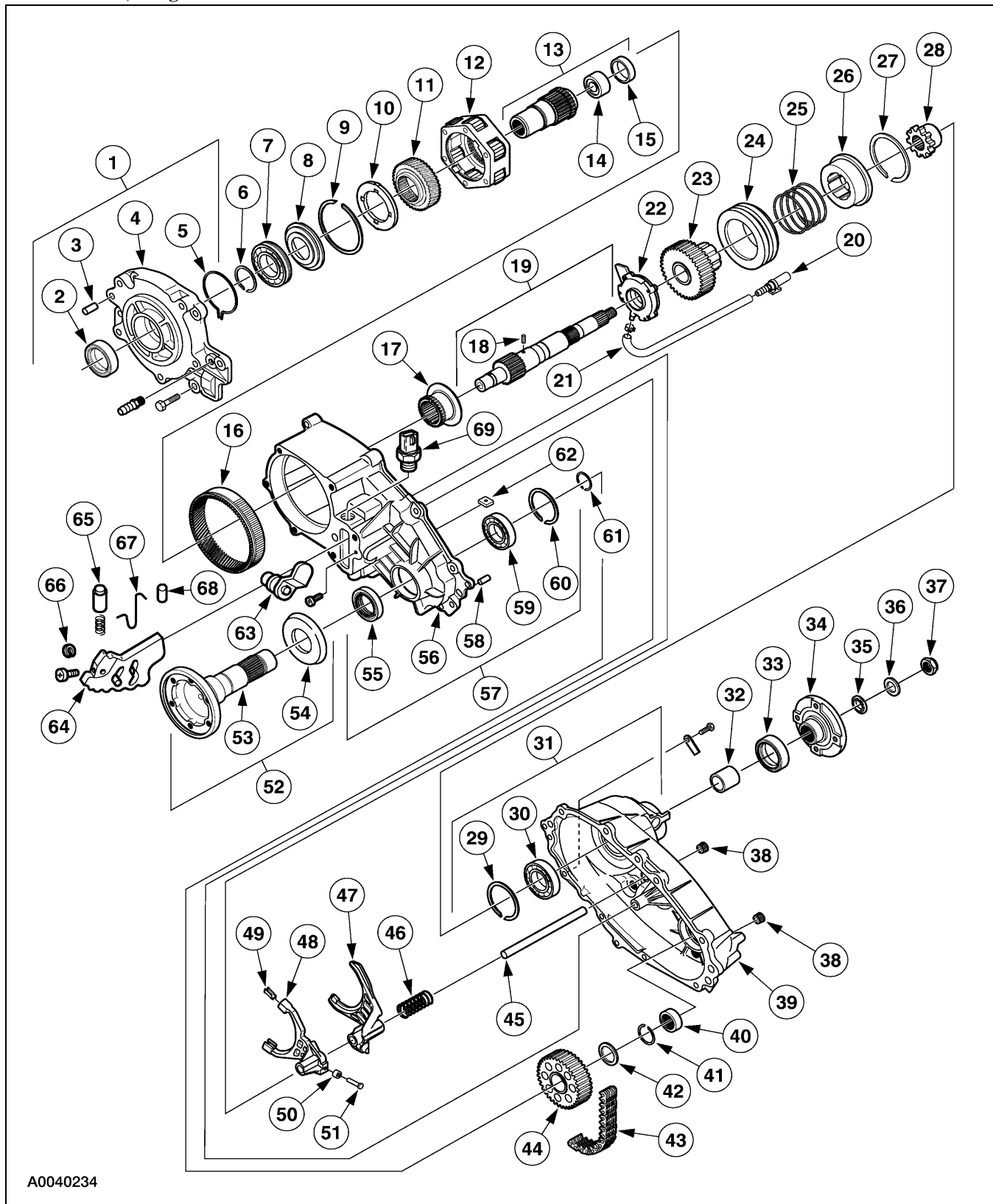


# DESCRIPTION AND OPERATION

## Transfer Case

Transfer Case, Borg-Warner 13-54 Manual Shift — Disassembled View



A0040234

**DESCRIPTION AND OPERATION (Continued)**

Item	Part Number	Description
1	7050	Front adapter assembly
2	7B215	Oil seal (also part of 7050)
3	—	Spiral pin (part of 7050)
4	—	Front adapter (part of 7050)
5	7917	Snap ring (also part of 7050)
6	7917	Snap ring
7	7025	Bearing
8	7A385	Thrust washer
9	7C122	Snap ring
10	7B066	Thrust plate
11	7D063	Sun gear
12	7A398	Planet carrier gear
13	7017	Input shaft assembly
14	7120	Needle bearing (also part of 7017)
15	7065	Sleeve bearing (also part of 7017)
16	7A153	Ring gear (part of 7005)
17	7100	Reduction hub
18	7B362	Spring pin
19	—	Out shaft
20	7A098	Oil strainer
21	—	Hose
22	7A149	Pump assembly
23	7177	Drive sprocket
24	7106	Lockup collar
25	7D126	Sleeve return spring
26	7D164	Lockup hub
27	—	Snap ring
28	7100	Shift collar hub
29	7917	Snap ring (also part of 7005)
30	7025	Bearing (also part of 7005)
31	—	Transfer cover assembly (part of 7005)
32	7072	Spacer
33	7B215	Oil seal
34	7B214	Flange
35	7052	Oil seal
36	7B368	Washer
37	7045	Nut
38	7A010	Pipe plug
39	—	Transfer case cover (part of 7005)

(Continued)

Item	Part Number	Description
40	7127	Needle bearing (also part of 7005)
41	7917	Snap ring
42	7119	Spacer
43	—	Drive chain
44	—	Driven sprocket
45	7240	Shift rail
46	7219	Return spring
47	7289	Lockup fork
48	—	Reduction shift fork (part of 7289)
49	7C430	Shift fork facing (also part of 7289)
50	—	Cam roller (part of 7289)
51	—	Cam pin (part of 7289)
52	7061	Front output shaft assembly
53	—	Front output shaft (part of 7061)
54	7C016	Dust deflector (also part of 7061)
55	7B215	Oil seal
56	—	Transfer case (part of 7005)
57	7005	Transfer case assembly
58	7B362	Dowel pin (also part of 7005)
59	7025	Bearing (also part of 7005)
60	7917	Snap ring (also part of 7005)
61	7917	Snap ring
62	7E290	Magnet
63	7N095	Shift shaft
64	7F063	Shift cam
65	7233	Detent plunger and spring
66	—	Clip
67	—	Spring
68	—	Roller
69	—	Four wheel drive switch

**Transfer Case Power Flow**

The Borg-Warner 13-54 shift transfer case provides LOW RANGE driving.

In the 4x2 mode, torque from the transmission is transferred to the input shaft assembly, which in turn drives the rear output shaft that drives the rear axle assembly.

---

**DESCRIPTION AND OPERATION (Continued)**

The 2W-4W shift is accomplished through the shifting of the lockup collar that engages the drive sprocket on the rear output shaft. The drive sprocket turns the drive chain which turns the driven sprocket on the front output shaft assembly. The front output shaft assembly then drives the front driveshaft.

The high-low shift is accomplished when the reduction fork assembly moves the reduction hub to engage the complete carrier assembly to the output shaft. Torque from the input shaft assembly is then transmitted through the sun gear which then turns the complete carrier assembly. The complete carrier assembly, now engaged to the output shaft, provides the reduction.

The unit is lubricated by a gerotor oil pump assembly that pumps the oil through the bore in the rear output shaft.