

F O R D 1 9 9 4

RANGER



Courtesy of TheRangerStation.com

1994 RANGER

Some see being "the best" as an end. At Ford, we see it as a beginning. At the heart of our philosophy of continuous improvement is the notion that the best products can *always* be made better.

Ford Ranger is a perfect example. America's best-selling compact pickup, the recently redesigned Ranger continues to move forward with an exciting new SuperCab model for Splash, the industry's first compact flareside.

Ranger has a swept, aerodynamic look. It has a smooth, controlled ride and a comfortable, refined interior. Yet it's tough enough to handle considerable payloads and has more versatility than a car.

Choose 4x2 or the rugged 4x4 with a bold, distinctive look all its own. There's also a choice between Regular Cab and SuperCab bodystyles.

Whether you select the stylish Splash, the gutsy STX, the value-packed XLT, the rugged XL, or the eye-catching XL Sport, you'll be getting a compact pickup with a solid reputation for toughness and a long history of success.

Top to bottom: Ranger Splash 4x4 shown in Raven Black;

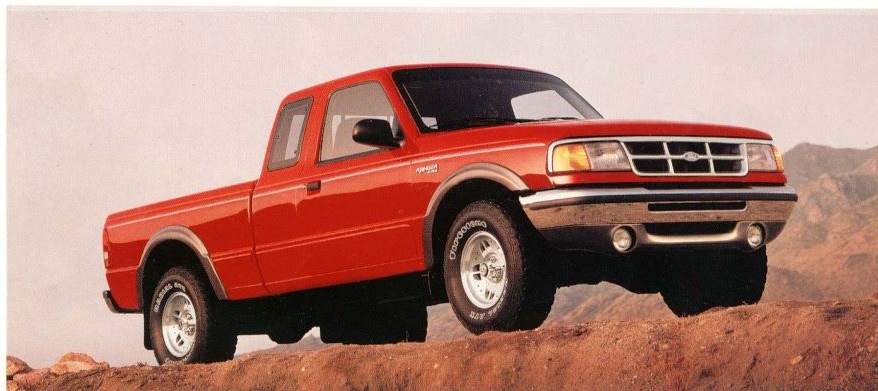
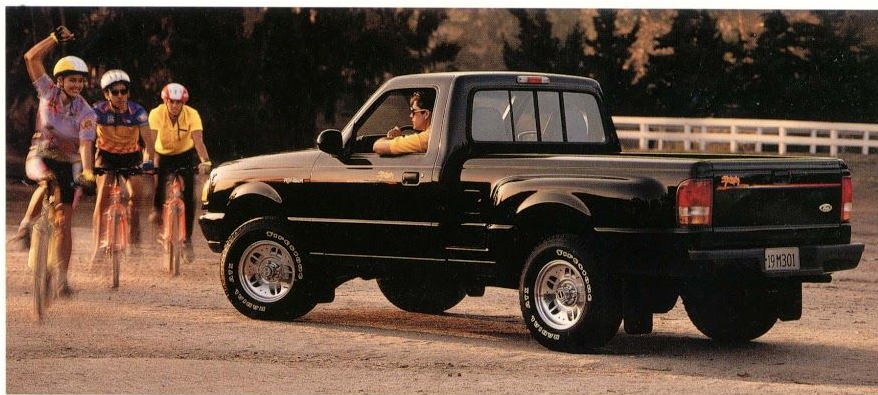
Ranger XLT SuperCab 4x4 shown in Vibrant Red;

Ranger XLT 4x2 shown in Two-Tone Brilliant Blue Clearcoat Metallic over Opal Grey Clearcoat Metallic.

Cover photograph: Imperial Sand Dunes Recreation Area, El Centro, California.

Foldout: Ranger XLT SuperCab 4x4 shown in Vibrant Red.

Some equipment shown may be optional.





RANGER XLT

When it comes to good looks and terrific value, it's hard to beat the popular Ranger XLT.

Standard interior features include a comfortable 3-passenger 60/40 split bench seat with storage armrest and floor console. Glove box, ashtray, map, engine compartment and cargo box lights. Deluxe door trim with lower carpeting and map pocket. Color-keyed carpeting. Cloth

headliner. Inside cargo cover (in the SuperCab). These and many other features make the XLT one of the best-equipped pickups you can buy.

Add the XLT Preferred Equipment Package and get even more value. It includes larger tires, an accent paint stripe, a chrome rear step bumper (standard with 4x4), electronic AM/FM stereo with cassette, power steering (4x2),

tinted sliding rear window, and rear jump seats (in the SuperCab model).

Shown here as a 4x2, XLT is also available as a 4x4 with a dynamic new chrome grille treatment and the convenience of automatic locking hubs with Touch Drive electric shift transfer case, which allows you to shift back and forth between 4x2- and 4x4-high at normal speeds.



Above: Ranger XLT Regular Cab 4x2 shown in Two-Tone Brilliant Blue Clearcoat Metallic over Opal Grey Clearcoat Metallic.

Left: Ranger XLT Regular Cab 4x2 shown in Cayman Green Clearcoat Metallic.

Some equipment shown on these pages may be optional.

RANGER INTERIORS



Ranger's interior compartment treats its passengers as guests. Whether you choose the Regular Cab model or the more spacious SuperCab, you're sure to enjoy the contemporary look and feel of this popular compact pickup.

Ranger comfort comes in a variety of styles. Full-length bench, 60/40 split bench, sport buckets or captain's chairs — within the Ranger line there's bound to be a seating arrangement just right for your style of trucking.

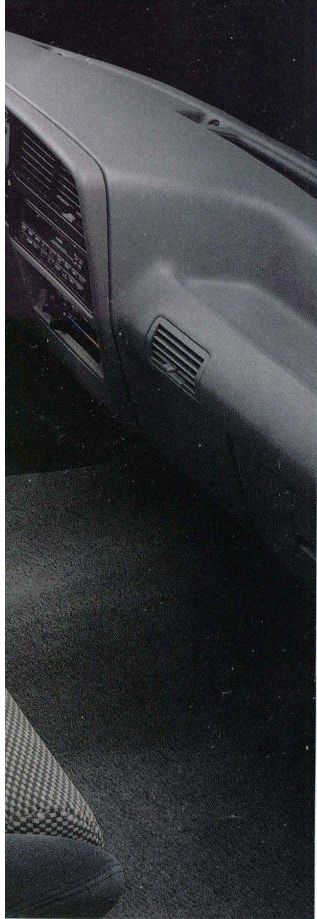
When it comes to driver convenience, the smallest of details have received careful attention. Instrumentation (including fuel, temperature, oil pressure gauges and volt-meter) is positioned for maximum readability. Controls are designed for ease of identification as well as operation.



Inset (above left): Convenient power windows and door locks are optional with XLT, STX and Splash.

Top and above: Ranger's ergonomically designed instrumentation and sport bucket seats in Opal Grey. Included in the STX Preferred Equipment Package, sport buckets are also available on XLT and Splash.

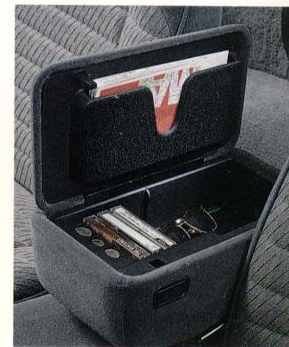
Some equipment shown on these pages may be optional.



Below: Ranger captain's chairs shown in Opal Grey. Captain's chairs are standard on STX and optional with XL and XLT SuperCabs.



A convenient cargo area cover is standard in XLT and STX SuperCab models.



Above: The 60/40 split bench seat includes a center armrest with a convenient storage compartment.

Left: A 60/40 split bench seat with cloth upholstery is standard with Ranger XLT and Splash, optional with other models.



RANGER STX

The dynamic look accurately reflects the capability. STX offers the best in Ranger performance, from its powerful 3.0L V-6 multi-port EFI engine to its handling-oriented suspension components (for even higher performance, the extra power of a 4.0L V-6 engine is optional for all 4x2 and 4x4 Rangers). Whether you're four-by-twoing a moon-

lit highway or four-by-fouring some rewardingly obstinate off-road trail, Ranger STX is definitely the way to go.

STX 4x4 has a look of determination all its own. Like all Ranger 4x4s, it offers standard auto-locking hubs with the Ford Touch Drive transfer case, which lets you shift "on the fly" between 4x2- and 4x4-high at normal driving

speeds at the mere touch of a button (manual-locking hubs and 2-speed shifter are available as an option).

Available in both Regular Cab and SuperCab, STX features cloth captain's chairs with floor console (sport buckets with STX Preferred Equipment Package), power steering, a tachometer, and a leather-wrapped sport wheel.



Above: Ranger STX Regular Cab 4x4 with its distinctive tape stripe, wheel flares, grille and fog lamps in Raven Black.

Left: Ranger STX SuperCab 4x2 in Silver Clearcoat Metallic.

Some equipment shown on these pages may be optional.

RANGER SPLASH

Since Ranger Splash is the industry's first compact pickup with a flareside design, it should come as no surprise that the industry's first compact flareside SuperCab is also Ranger Splash (see your dealer for availability). SuperCab adds a lot of roomy versatility to your driving enjoyment.

Regular Cab or SuperCab, the solid, low-riding stance of the Splash 4x2 is eye-catching. But it's also beneficial. This low stance, combined with a special handling suspension and 15" wheels and tires, produces confident handling and a lot of driving fun.

Splash 4x4 combines power, versatility and fun-toughness and has a look all its own. Its 3.0L V-6 with multi-port electronic fuel injection packs the punch. Convenient pushbutton Touch Drive auto-locking hubs are also standard.

Whichever Splash model you choose, you'll be getting an affordably priced and well-equipped pickup with a very contagious attitude about fun.

Right: Ranger Splash 4x4 in Brilliant Blue Clearcoat Metallic. Special deep-dish cast aluminum wheels are part of the distinctive appearance of Splash 4x4 models.

Far right: Ranger Splash 4x2 with its standard full-face chrome wheels in Vibrant Red. Color-keyed components effect a bold, monochromatic look.





Above: The new Ranger Splash SuperCab shown in Vibrant Red. All the fun of owning a Splash along with SuperCab practicality. See your dealer for date of availability.

Some equipment shown on these pages may be optional.

ENGINEERING & SAFETY

Ranger is engineered to make tough jobs easy and to make fun trips more fun. The peppy 2.3L I-4, powerful 3.0L V-6 and brawny 4.0L V-6 engines all incorporate the technology of multi-port electronic fuel injection for precise fuel metering. Twin-I-Beam (4x2) and Twin-Traction Beam (4x4) suspensions with nitrogen gas-pressurized shocks promote excellent ride and handling.

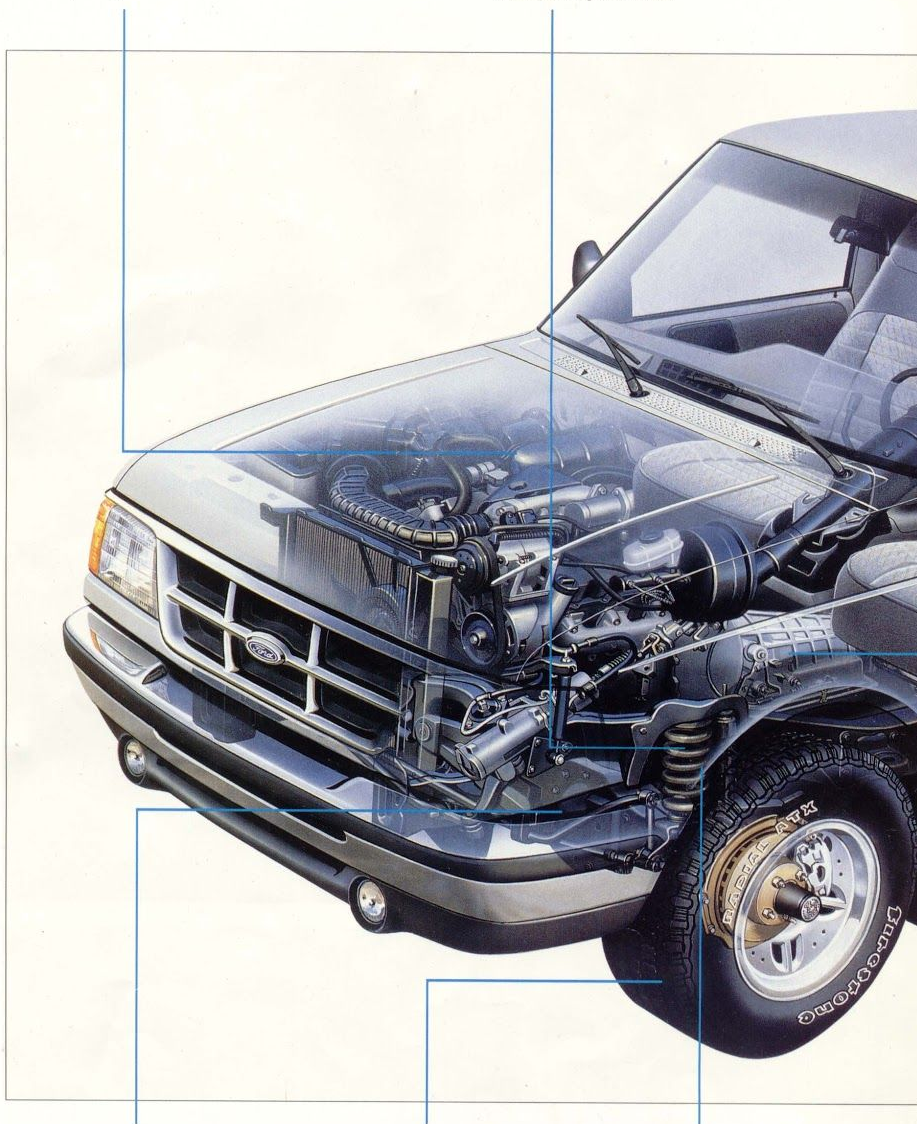
Ranger's smooth, rounded sheet metal, aero-designed functional items (lamps, handles, mirrors, etc.), flush glass, and concealed drip moldings all combine to help reduce wind noise around the passenger compartment, making the drive more pleasant.

RANGER SAFETY

Safety is a major concern for you as a driver and it's a high priority for us as well. Many of the performance features discussed here are related to safety (power for passing, for example). In addition, Ford Ranger features specific safety items like power brakes which include a standard rear anti-lock system. They help you come to a straighter stop should braking-induced rear-wheel lockup occur. And all Ranger models now include guard beams in the doors.

All Ranger powerplants feature the precision of multi-port electronic fuel injection.

Front coil and rear leaf springs are computer-selected to match them precisely to the payload and the gross vehicle weight rating, ensuring predictable ride and handling when operating with a load.



Ranger's exclusive Twin-I-Beam (4x2) and Twin-Traction Beam (4x4) suspension systems incorporate separate axles to provide independent wheel action to handle bumps individually.

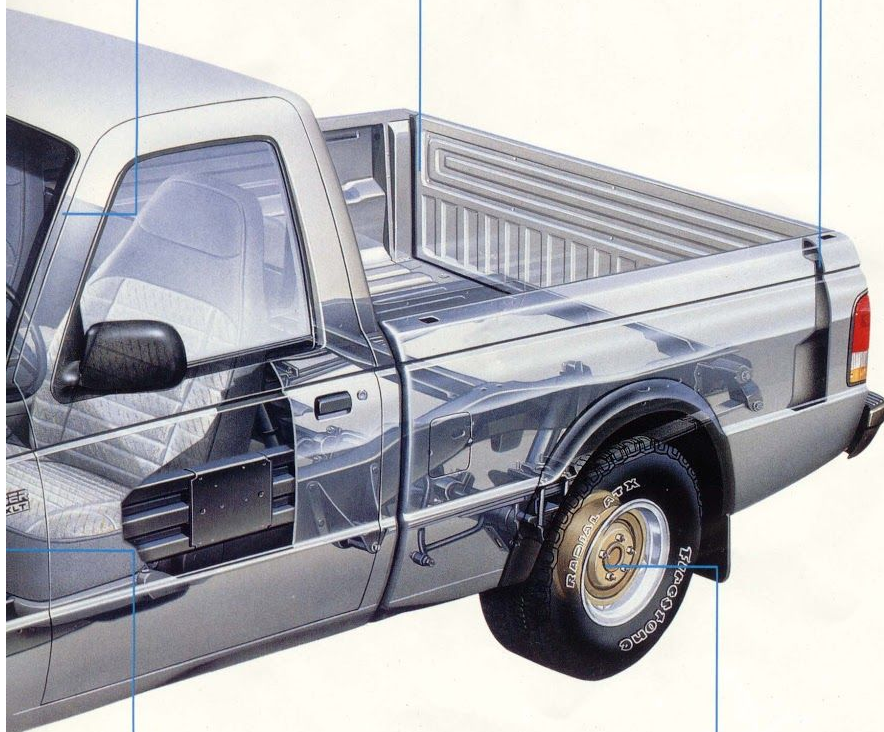
Ranger's body styling and suspension design allow for a wide range of available tires — up to P265/75R15 (long-wheelbase 4x4 models and 4x4 SuperCabs).

Nitrogen gas-pressurized shock absorbers are designed to improve ride quality.

Ranger's exterior sheet metal has an aerodynamic look, due in part to smooth corners, limousine-style doors and glass components that are flush with the body.

The tough all-welded pickup box features double-wall construction and a tailgate that's easily removable.

Ranger uses two-sided galvanized steel extensively to help protect against corrosion.



Standard in Ranger 4x4 models, the Touch Drive electric shift transfer case provides great 4-wheeling convenience, allowing you to shift back and forth between 4x2- and 4x4-high at normal road speeds. Push-button controls are an easy reach away on the instrument panel.

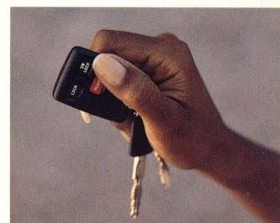
Ranger's standard power front disc/rear drum brakes are equipped with a computer-controlled rear anti-lock system designed to inhibit braking-induced rear-wheel lockup under most driving conditions.



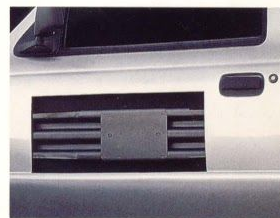
On the road, the better you can see, the better off you are. Ranger's optional fog lamps (4x4) help clear the way.



Ranger's rear anti-lock brakes can help you come to smoother, straighter stops if brake-induced rear wheel lockup occurs.



Enjoy the added security that the remote entry system provides. It's available for installation at your Ford Dealer.



All 1994 Ranger models feature a strong steel guard beam in each door.

PERSONALIZING RANGER

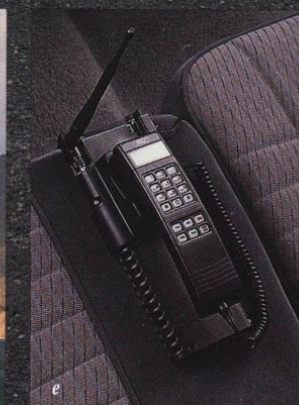
More and more it seems, personalization can be a big part of owning a truck, and Ranger offers tremendous flexibility in this regard. Factory options and quality Ford accessories are available from your Ford Dealer to help you make your new pickup stand out from the crowd, to make it "your own." Whether your taste leans toward the sporty and



aggressive, the elegant and understated, or anything in between, there's a good bet you'll find one or more attractive accessories and/or factory options to do the job. Shown here are a number of these items which are particularly well suited to Ranger.

Ford accessories and options are products of the same commitment to high quality that goes into the building of the vehicle itself. The new-vehicle limited warranty covers Ford accessories and options, too (see your dealer for details). They're the perfect finishing touches for your brand new Ranger.





- (a) The clarity of digital sound is available with Ranger's premium AM/FM stereo radio with CD player.
- (b) Available heavy-duty tubular bumper.
- (c) The available high-density bedliner helps guard against cargo damage and includes a protective tailgate panel.
- (d) Available heavy-duty rally bars add a rugged, sporty look (not intended for occupant safety). Also shown are off-road lights, available separately.
- (e) The convenience of a cellular telephone is available through your participating Ford Dealer.
- (f) Wheels (top to bottom): full-face steel (4x2); full-face steel (4x4); STX cast aluminum sport; cast aluminum deep dish.

RANGER XL SPORT

Select Ranger XL Sport (Preferred Equipment Package 862A) and get cast aluminum wheels in a handsome deep-dish design along with a distinctive tape stripe (right). If you prefer, you may elect to delete the tape treatment.

XL Sport has all the XL standard features plus an electronic AM/FM stereo radio with cassette tape and digital clock as well as larger P215/70x14SL tires (on 4x2 models).

Ranger XL Sport, shown in Raven Black, features a tape stripe treatment (bottom photo) which may be deleted.



COLORS AND TRIMS — STX

Exterior Paint Colors	Interior Trim Colors			
	Royal Blue	Ruby Red	Opal Grey	Mocha
Raven Black			■	■
Oxford White	■	■	■	■
Cayman Green Clearcoat Metallic			■	■
Vibrant Red			■	■
Dark Plum Clearcoat Metallic			■	
Brilliant Blue Clearcoat Metallic	■		■	
Dark Blue Clearcoat Metallic*	■		■	■
Bright Calypso Green Clearcoat Metallic			■	
Opal Grey Clearcoat Metallic	■**		■	
Silver Clearcoat Metallic	■**	■**	■	
Mocha Frost Clearcoat Metallic				■
Electric Red Clearcoat Metallic		■	■	■
Dark Cranberry Clearcoat Metallic†		■**	■	■

*4x2 only. **4x4 only. †Regular Cab only.

COLORS AND TRIMS — XL, XL Sport and XLT

Exterior Paint Colors	Interior Trim Colors			
	Royal Blue	Ruby Red	Opal Grey	Mocha*
Raven Black			■	■
Oxford White	■	■	■	■
Cayman Green Clearcoat Metallic			■	■
Mocha Frost Clearcoat Metallic*				■
Electric Red Clearcoat Metallic*		■	■	■
Dark Cranberry Clearcoat Metallic*†		■	■	■
Vibrant Red			■	■
Dark Plum Clearcoat Metallic			■	
Brilliant Blue Clearcoat Metallic	■		■	
Dark Blue Clearcoat Metallic††	■		■	■
Bright Calypso Green Clearcoat Metallic			■	
Opal Grey Clearcoat Metallic	■	■*	■	
Silver Clearcoat Metallic	■	■*	■	

*Not available with XL Sport. †Regular Cab only. ††XL Sport and XLT only.

NOTE: See your dealer for optional Deluxe Two-Tone paint colors for Ranger XLT.

COLORS AND TRIMS — SPLASH

Exterior Paint Colors	Interior Trim Colors			
	Royal Blue	Ruby Red	Opal Grey	Mocha
Raven Black	■	■	■	■
Oxford White	■	■	■	■
Vibrant Red			■	■
Brilliant Blue Clearcoat Metallic	■		■	

RANGER PREFERRED EQUIPMENT PACKAGES AND OPTIONS

Note: Package content is subject to change.

P = Included in package S = Standard O = Optional

	Regular Cab 4x2/4x4					SuperCab 4x2/4x4			
	XL 861A	XL Sport 862A	XLT 864A	STX 865A	Splash 866A	XL 850A	XLT 853A	STX 854A	Splash 855A
Appearance/Comfort/Convenience									
CFC-free air conditioning system	O	O	O	O	O	O	O	O	O
Power window and lock group	-	-	O	O	O	-	O	O	O
Speed control/tilt steering wheel	-	-	O	O	O	-	O	P	O
Power mirrors	-	-	O	O	S	-	O	O	S
"Comfort Cab" Package: color-keyed carpeting, high series door trim panels, full-face steel wheels, and P215/70R14SL all-season tires (4x2) (may be deleted)	-	-	-	-	-	P	-	-	-
Floor console	O	O	S	O	S	O	S	O	S
Floor mat in place of carpet	S	S	-	-	-	S	-	-	-
XLT 4x2 grey grille with bright upper molding in lieu of 4x4 chrome grille (XLT 4x4 only). No additional charge.	-	-	O	-	-	-	O	-	-
Deluxe two-tone paint	-	-	O	-	-	-	O	-	-
Sport tape stripe (may be deleted)	-	P	-	-	-	-	-	-	-
Narrow accent tape stripe (may be deleted)	-	-	P	-	-	-	P	-	-
Bodyside protection moldings	-	-	O	O	-	-	O	O	-
Chrome rear step bumper (4x2/4x4)	-	-	P/S	-	-	-	P/S	-	-
Grey painted rear step bumper (except XLT 4x4) (color-keyed with Splash)	S	S	S	S	S	S	S	S	S
Sliding, tinted rear window	O	O	P	O	P	O	P	O	P
Pivoting rear quarter windows	-	-	-	-	-	O	O	O	O
License plate bracket	O	O	O	O	O	O	O	O	O
Seating									
Vinyl bench	S	S	-	-	-	-	-	-	-
60/40 cloth split bench	O	O	S	O	S	S	S	O	S
Cloth captain's chairs with floor console	-	-	-	S	-	O	O	S	-
Cloth sport bucket seats with floor console	-	-	O	P	O	-	O	P	O
Rear jump seats	-	-	-	-	-	O	P	P	P
Stereo Systems									
Electronic AM/FM stereo radio/digital clock	O	O	S	S	S	O	S	S	S
Electronic AM/FM stereo radio/cassette/clock (may be deleted for credit without loss of discount)	O	P	P	P	P	O	P	P	P
Electronic premium AM/FM stereo radio/cassette/clock	-	-	O	O	O	-	O	O	O
Electronic premium AM/FM stereo radio/CD/clock	-	-	O	O	O	-	O	O	O
Performance									
Engines/Transmissions/Tires/Payloads (See availability by trim model on pages 20 and 21)									
Performance axle (with V-6 engine only)	O	O	O	O	O	O	O	O	O
High-capacity 19.6-gallon fuel tank (114" wb only)	O	O	O	O	-	-	-	-	-
Power steering (4x2; standard on 4x4)	O	O	P	S	S	S	S	S	S
Tachometer (standard with 4x4)	O	O	O	S	O	O	O	S	O
Super engine cooling	O	O	O	O	O	O	O	O	O
Manual locking hubs (4x4 only)	O	O	O	O	O	O	O	O	O
Fog lamps (4x4) (may be deleted)	-	-	O	P	-	-	O	P	-
Handling package: front and rear stabilizer bars (front stabilizer bar standard on SuperCabs and on all Regular Cabs with power steering) and heavy-duty shock absorbers — 4x2 model only	O	O	O	S	-	O	O	S	-
Spare tire, limited service (4x2)	P	P	-	-	-	-	-	-	-
Wheel Trim									
Argent styled steel wheels	S	S	-	-	-	S	-	-	-
Full-face steel wheels	O	-	S	S	-	O	S	S	-
Full-face chrome wheels (4x2)	-	-	-	-	S	-	-	-	S
Cast aluminum deep-dish wheels (4x2)	O	P	O	P	-	O	O	P	-
Cast aluminum deep-dish wheels (4x4)	O	P	O	O	S	O	O	O	S
Cast aluminum sport wheels (4x4)	-	-	-	P	-	-	-	P	-
Manual Transmission Special Value Package									
Deep-dish cast aluminum wheels	-	-	P	-	-	-	P	-	-

MAJOR STANDARD FEATURES

Exterior

Aero halogen headlamps

Grey grille with black eyebrow molding (bright eyebrow on XLT 4x2, all chrome on XLT 4x4); color-keyed painted (Splash)

Grey aero-design wraparound front bumper (chrome with XLT, color-keyed with Splash)

Rear step bumper

Black foldaway mirrors (RH convex); color-keyed power mirrors (Splash)

Tinted glass

Easily removable tailgate

Cargo box light (XLT, STX, Splash)

Wheel opening flares (4x4, except Splash)

High-mount center stop lamp

Interior

Ergonomic instrument cluster with fuel, temperature, oil pressure and volt-meter gauges; trip odometer

Locking glove box

Stalk-mounted controls for turn signals, constant speed and interval windshield wipers/washer, high-beams, and flash-to-pass feature

Tachometer (standard in all 4x4s and STX 4x2)

Glove box, engine compartment, ash-tray and map lights; headlights-on warning chime (XLT, STX, Splash)

Steering wheel: black (leather-wrapped STX)

Door trim: color-keyed with vinyl padded armrest and black door handles; color-keyed cloth/vinyl with map pockets (XLT, STX, Splash)

Lap/shoulder belts for outboard seating positions

Color-keyed cloth sun visors, mirror on right, map strap on left (except Regular Cab XL)

Inside cargo cover (XLT and STX SuperCab models)

Technical

5-speed manual OD transmission

Multi-port electronic fuel injection

Power front disc brakes; rear drum brakes with anti-lock system

Twin-I-Beam (4x2) and Twin-Traction Beam (4x4) independent front suspensions; nitrogen gas-pressurized shock absorbers (heavy-duty on 4x4)

Automatic locking hubs with Touch Drive electric shift transfer case (4x4)

PRODUCT CHANGES

Following publication of the catalog, certain changes in standard equipment, options, prices and the like, or product delays, may have occurred which would not be included in these pages. Your Ford Dealer is your best source for up-to-date information.

Ford Division reserves the right to change product specifications at any time without incurring obligations.

RANGER 4x2 SPECIFICATIONS

GVW Rating (max.)	4,700 lbs. - Regular Cab; 4,860 lbs. - SuperCab
Frame	Ladder-type
Axles: front	2,400 lbs. Regular Cab/2,625 lbs. SuperCab
Axles: rear	Std. 2,750 lbs.; Opt. 2,750 lbs. Limited Slip
Computer-selected front coil springs (combined rating @ ground)	1,950 lbs. - Regular Cab; 2,150 lbs. - SuperCab
Computer-selected rear leaf springs (combined rating @ ground)	2,550 lbs.
Shock absorbers	Std. gas-pressurized; Opt. heavy-duty gas-pressurized
Front stabilizer bar	Standard (front and rear standard with Splash)
Rear stabilizer bar (part of handling package)	Opt. - Regular Cab and SuperCab
Special handling suspension	Splash
Brakes	Power front discs; power rear drums with anti-lock system
Battery	58 AH maintenance-free - Regular Cab 72 AH maintenance-free - SuperCab
Alternator	95 amps
Fuel capacity	16.3 gals. - Regular Cab 20 gals. - SuperCab (19.6 opt. in 114" wb Regular Cab)
Nominal box length	6 ft. - 108" wb Regular Cab and 125" wb SuperCab 7 ft. - 114" wb Regular Cab
Steering: Regular Cab	Manual - std. in XL and XL Sport Power - incl. in XLT, STX and Splash; opt in XL and XL Sport
Steering: SuperCab	Power
Curb-to-curb turning diameter	36.5 ft. - 108" wb Regular Cab 38.3 ft. - 114" wb Regular Cab 41.6 ft. - 125" wb SuperCab

POWERTEAM AVAILABILITY BY TRIM MODEL — 4x2

	Regular Cab					SuperCab			
	XL	Sport	XLT	STX	Splash	XL	XLT	STX	Splash
2.3L I-4/5-Speed Man.	S	S	S	-	S	S	S	-	S
2.3L I-4/4-Speed Auto.	O	O	O	-	O	-	-	-	-
3.0L V-6/5-Speed Man.	O	O	O	S	O	O	O	S	O
3.0L V-6/4-Speed Auto.	O	O	O	O	O	O	O	O	O
4.0L V-6/5-Speed Man.	O	O	O	O	O	O	O	O	O
4.0L V-6/4-Speed Auto.	O	O	O	O	O	O	O	O	O

2.3L ENGINE

Type/cylinders:	Gasoline/I-4, 8 plugs
Liters/cubic inches:	2.3/140
Fuel injection:	Electronic multi-port
Bore and stroke:	3.78 x 3.13
Compression ratio:	9.2:1
Horsepower:	98 @ 4,600 rpm
Torque, lbs./ft.:	130 @ 2,600 rpm

3.0L ENGINE

Type/cylinders:	Gasoline/V-6
Liters/cubic inches:	3.0/182
Fuel injection:	Electronic multi-port
Bore and stroke:	3.50 x 3.14
Compression ratio:	9.2:1
Horsepower:	140 @ 4,800 rpm
Torque, lbs./ft.:	160 @ 3,000 rpm

RANGER 4x4 SPECIFICATIONS

GVW Rating (max.)	4,880 lbs. - Regular Cab; 5,060 lbs. - SuperCab
Frame	Ladder-type
Axles: front	2,800 lbs.
Axles: rear	Std. 2,750 lbs.; Opt. 2,750 lbs. Limited Slip
Computer-selected front coil springs (combined rating @ ground)	2,260 lbs. - Regular Cab; 2,340 lbs. - SuperCab
Computer-selected rear leaf springs (combined rating @ ground)	2,570 lbs. - Regular Cab; 2,750 lbs. - SuperCab
Shock absorbers	Heavy-duty gas-pressurized
Stabilizer bars	Standard front and rear
Brakes	Power front discs; power rear drums with anti-lock system
Front hubs/transfer case	Std. automatic locking/Touch Drive 2-speed electric shift Opt. manual locking/2-speed manual shift
Battery	58 AH maintenance-free - Regular Cab 72 AH maintenance-free - SuperCab
Alternator	95 amps
Fuel capacity	16.3 gals. - Regular Cab 20 gals. - SuperCab (19.6 opt. in 114" wb Regular Cab)
Nominal box length	6 ft. - 108" wb Regular Cab and 125" wb SuperCab 7 ft. - 114" wb Regular Cab
Steering	Power
Curb-to-curb turning diameter (ft.)	37.3 ft. - 108" wb Regular Cab 39.1 ft. - 114" wb Regular Cab 42.4 ft. - 125" wb SuperCab

POWERTEAM AVAILABILITY BY TRIM MODEL — 4x4

	Regular Cab					SuperCab			
	XL	Sport	XLT	STX	Splash	XL	XLT	STX	Splash
2.3L I-4/5-Speed Man.	S	S	S	-	-	-	-	-	-
3.0L V-6/5-Speed Man.	O	O	P	S	S	S	S	S	S
3.0L V-6/4-Speed Auto.	O	O	O	O	O	O	O	O	O
4.0L V-6/5-Speed Man.	O	O	O	O	O	O	O	O	O
4.0L V-6/4-Speed Auto.	O	O	O	O	O	O	O	O	O

4.0L ENGINE

Type/cylinders:	Gasoline/V-6
Liters/cubic inches:	4.0/245
Fuel injection:	Electronic multi-port
Bore and stroke:	3.95 x 3.32
Compression ratio:	9.0:1
Horsepower:	160 @ 4,000 rpm
Torque, lbs./ft.:	225 @ 2,500 rpm*

*220 @ 2,800 rpm for automatic transmission.



MAXIMUM TRAILER TOWING WEIGHTS

	Axle Ratio	GCWR Max.	Regular Cab		SuperCab	
			4x2*	4x4†	4x2*	4x4†
2.3L EFI I-4/4-Speed Auto.	3.73	5,500	2,300	—	—	—
3.0L EFI V-6/4-Speed Auto.	3.45	7,000	3,700	—	3,500	—
	3.73	7,500	4,000	4,000	4,000	3,800
	4.10	8,000	—	4,500	—	4,300
4.0L EFI V-6/4-Speed Auto.	3.08	6,000	2,700	—	2,400	—
	3.27	7,500	—	3,900	—	3,600
	3.55	9,500	6,000	—	5,900	—
	3.73	9,500	—	5,900	—	5,600
2.3L EFI I-4/5-Speed Man.	3.73	4,800	1,600	—	1,300	—
	4.10	4,800	—	1,300	—	—
3.0L EFI V-6/5-Speed Man.	3.45	5,000	1,800	1,500	1,500	1,300
	3.73	6,000	2,800	2,500	2,500	2,300
4.0L EFI V-6/5-Speed Man.	3.08	5,000	1,700	—	1,400	—
	3.27	6,000	—	2,000	—	2,000
	3.55	7,000	3,700	—	3,400	—
	3.73	7,000	—	3,400	—	3,200

NOTE: Engine/axle ratio combinations shown may not be available in all areas. Your Ford Dealer can supply availability information. All maximum trailer weights shown must be reduced by passenger and cargo weight in the towing vehicle. Also, for towing trailer over 2,000 pounds, the Regular Cab model must be equipped with the payload package #2. The following equipment may also be required: super engine cooling; step bumper or load-carrying hitch for towing trailers under 2,000 pounds; and load-equalizing hitch for towing trailers over 2,000 pounds. For specific information on recommended or required equipment, see your Ford Dealer. Hitches are available through manufacturers other than Ford. *Maximum trailer weight for 4x2 Splash is 2,000 lbs. †Includes Splash.

TIRE AVAILABILITY BY TRIM MODEL

4x2 model	Regular Cab					SuperCab			
	XL	Sport	XLT	STX	Splash	XL	XLT	STX	Splash
P195/70R BSWx14 all-season	S	S	S	—	—	S	S	—	—
P215/70R BSWx14 all-season	O	P	—	—	—	O	—	—	—
P225/70R OWLx14 all-season	O	O	P	S	—	O	P	S	—
P235/60R RBLx15 all-season	—	—	—	—	S	—	—	—	S

4x4 model									
P215/75R BSWx15 all-season	S	S	S	—	—	S	S	—	—
P215/75R OWLx15 all-terrain	O	O	O	S	—	O	O	S	—
P235/75R OWLx15 all-terrain ^(a)	O	O	P	P	S	O	P	P	S
P265/75R OWLx15 all-terrain ^(a)	O	O	O	O	—	O	O	O	—

S = Standard, O = Optional, P = Included in Preferred Equipment Package.

*114" and 125" wb only. (a) 225 temporary spare provided.

PAYLOAD PACKAGE SELECTOR

Regular Cab	Package No.	Payload	GVWR	Tires (Min.)
4x2 SWB Splash	#1 Std.	1,050 lbs.	4,140 lbs.	P235/60R15SL
4x2 SWB	#1 Std.	1,250 lbs.	4,220 lbs.	P195/70R14SL
4x2 SWB	#2 Opt.	1,650 lbs.	4,660 lbs.	P215/70R14SL
4x2 LWB	#1 Std.	1,250 lbs.	4,260 lbs.	P195/70R14SL
4x2 LWB	#2 Opt.	1,650 lbs.	4,700 lbs.	P215/70R14SL
4x4 SWB Splash	#1 Std.	1,250 lbs.	4,600 lbs.	P235/75R15SL
4x4 SWB Splash	#2 Opt.	1,500 lbs.	4,840 lbs.	P235/75R15SL
4x4 SWB	#1 Std.	1,250 lbs.	4,580 lbs.	P215/75R15SL
4x4 SWB	#2 Opt.	1,550 lbs.	4,860 lbs.	P215/75R15SL
4x4 LWB	#1 Std.	1,250 lbs.	4,580 lbs.	P215/75R15SL
4x4 LWB	#2 Opt.	1,550 lbs.	4,880 lbs.	P215/75R15SL
SuperCab*				
4x2	#1 Std.	1,240 lbs.	4,460 lbs.	P195/70R14SL
4x2	#2 Opt.	1,550 lbs.	4,860 lbs.	P215/70R14SL
4x4	#1 Std.	1,250 lbs.	4,840 lbs.	P215/75R15SL
4x4	#2 Opt.	1,500 lbs.	5,060 lbs.	P215/75R15SL
4x4 Splash	#1 Std.	1,250 lbs.	4,840 lbs.	P235/75R15SL
4x4 Splash	#2 Opt.	1,500 lbs.	5,080 lbs.	P235/75R15SL

SWB = short wheelbase (108" Regular Cab), LWB = long wheelbase (114" Regular Cab).

Note: Payload is the maximum allowable weight of people, cargo, body and equipment and is reduced by the weight of optional equipment. *See your dealer for Splash 4x2 SuperCab packages.

EXTERIOR DIMENSIONS

Wheelbase	Cab Length	Box Length*	Overall Length	Overall Width
108"	104.7"	76.1"	180.0"	69.4"
114"	104.7"	88.2"	193.0"	69.4"
125" SC	120.9"	76.1"	198.2"	69.4"
Load Height at Cargo Floor 4x2/4x4 (Empty)*	Front Tread 4x2/4x4	Rear Tread 4x2/4x4	Axle Clearance 4x2/4x4	
27.1"/32.0"	56.7"/58.3"	57.3"/57.3"	6.6"/6.8"	
27.0"/32.1"	56.7"/58.3"	57.3"/57.3"	6.6"/6.8"	
27.4"/31.3"	56.7"/58.3"	57.3"/57.3"	6.6"/6.8"	

*Does not include Splash dimensions.

INTERIOR DIMENSIONS

Passenger Compartment	Regular Cab	SuperCab
Head room	39.1"	39.4"
Shoulder room	54.6"	54.6"
Hip room	52.7"	52.7"
Leg room (max.)	42.4"	43.4"
Space behind seat (cu. ft.)	—	18.1*
Cargo Compartment**		
Box length at floor — short wheelbase	72.2"	—
Box length at floor — long wheelbase	84.2"	72.2"
Maximum inside width at floor	51.2"	51.2"
Pickup box depth	16.5"	16.5"
Cargo volume — cu. ft. (no allowance for wheelhouses)		
Short wheelbase	37.4"	—
Long wheelbase	43.5"	37.4"

*18.1 cu. ft. with rear jump seats; 22.2 cu. ft. without rear jump seats.

**Does not include Splash.



BUMPER-TO-BUMPER COVERAGE

The 36-month/36,000-mile bumper-to-bumper coverage of Ford's new vehicle limited warranty covers the complete vehicle (except tires, battery, service adjustments and other items covered under separate provisions) against defects in factory-supplied materials or workmanship. For complete information, see your Ford Dealer.

ROADSIDE ASSISTANCE PROGRAM

Every new Ford includes the assurance of an emergency Roadside Assistance Program provided by Ford Auto Club, Inc. during the 3-year/36,000-mile bumper-to-bumper warranty period. Help is a toll-free phone call away 24 hours a day, anywhere in the continental United States should you need any towing assistance, fuel delivery, tire change, a jump start or even help when you're locked out of your truck. Ask your Ford Dealer for complete details on the Ford Roadside Assistance Program and a copy of the limited warranty.

FORD CITIBANK CREDIT CARD

Using your Ford Citibank Visa® or MasterCard® could earn you hundreds, even thousands of dollars from Ford toward the purchase or lease of a new Ford, Lincoln or Mercury product. To apply or get more information, call 1-800-374-7777. Or visit a Ford or Lincoln-Mercury dealer, or a branch office of Citibank.



Ford Credit is a full service company that makes a wide variety of financing and leasing programs available to qualified buyers through the Ford Dealer of your choice. Through Ford Credit's financing or Red Carpet leasing, arrangements suited to your special needs can be made quickly and conveniently right at the dealership. Ask your Ford Dealer for the facts on any of Ford Credit's financing or lease plans.



"Tread Lightly" is an educational program designed to increase public awareness of land-use regulations and responsibilities in our nation's wilderness areas. Ford joins the U.S. Forest Service and Bureau of Land Management in encouraging you to help preserve our national forests and other public and private lands by "treading lightly."



Optional Ford Extended Service Plans can cover major components on new Ford cars and light trucks for longer than the vehicle's basic warranty. Your Ford Dealer has full details.

OPTIONS AVAILABILITY

Options shown or described in this catalog are available at extra cost and may be offered only in combination with other options or subject to additional ordering requirements or limitations.

