

F O R D 1 9 9 2

# Ranger



Courtesy of [TheRangerStation.com](http://TheRangerStation.com)



IN HEAD-TO-HEAD  
COMPETITION,  
RANGER OUTSELLS  
EVERY OTHER  
COMPACT TRUCK,  
YEAR AFTER YEAR.

Sport performance and styling. Pickup utility and toughness. Nobody puts it all together in a compact truck better than Ford.

Want to know how much fun Ranger can be? Drive an agile, V-6-powered STX.

For the value-conscious, Ranger offers a lot for the money, as you can see in the XLT and Sport Preferred Equipment Packages.

Ranger is fun-tough. And it's work-tough, too. Look into a Ranger "S" or Custom,

ruggedly built and affordable. For more on commercial applications, see the Ford Pickups and Chassis catalog.

More engines with "multi-port" electronic fuel injection.





tion than in any other compact truck. The superior convenience of our exclusive Touch Drive 4x4 transfer case. These also are reasons for Ranger's popularity.



And consider, too, improvements like more corrosion-fighting 2-sided galvanized steel. You'll see why Ranger out sells every other compact truck. And you'll see what we mean when we say, The Best Never Rest.

**Ford Trucks.  
The Best Never Rest.™**

Ford Ranger is available in two body styles: the standard Regular Cab and the longer and roomier SuperCab. The wide variety of trim models includes the "S",

Custom, Sport, XLT and STX Regular Cabs; and the Custom, XLT and STX SuperCabs. And every Ranger is available as a 4x2 or 4x4.

Shown here are the Ranger XLT Regular Cab in Mocha Frost Clearcoat Metallic (at left), and the Ranger XLT SuperCab in deluxe two-tone Bright Red/Silver Clearcoat Metallic (below). Some equipment shown on these pages is optional.





THE BEST VALUE  
IN AMERICA'S  
MOST POPULAR  
COMPACT PICKUP.  
FORD RANGER XLT.

Ranger is America's most popular compact pickup. Which is not surprising when you consider Ranger's design and engineering excellence. And great value, too, as so many drivers have found in the Ranger XLT model.

XLT is one well-equipped pickup. Chrome grille and front bumper. A comfortable 3-passenger 60/40 split bench seat. Deluxe door trim with lower carpeting and map pocket. Color-keyed carpeting. Cloth headliner. These and many other features (page 14) are all standard.

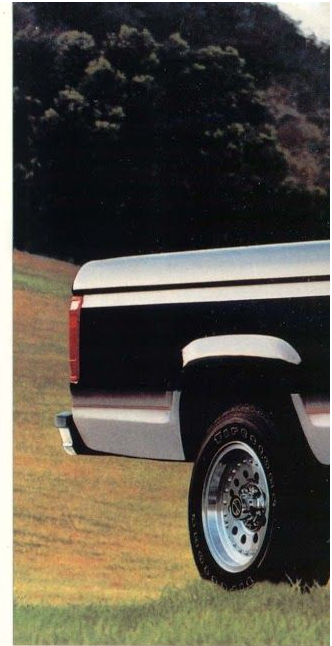
But what makes Ranger XLT such a great value is its Preferred Equipment Package. It includes popular options at a substantial savings over the suggested

price of the options if they were purchased separately.

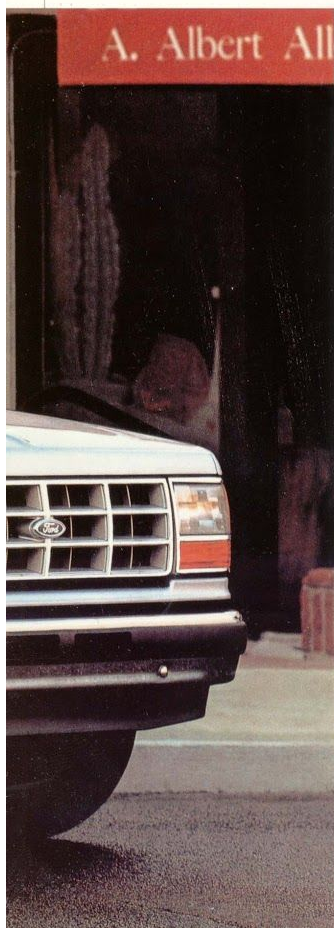
Interior features include electronic AM/FM stereo with cassette tape player and digital clock, power-assisted steering, plus rear folding jump seats in the SuperCab model.

Exterior features include a unique lower accent tape stripe, sliding rear window, chrome rear step bumper, and P215 14" all-season (4x2) or 15" all-terrain (4x4) outlined white-letter tires.

What's more, when you select the XLT Manual Transmission Special Value Package, you not only get everything in the Preferred Equipment Package, but you also get stylish deep-dish cast aluminum wheels.







*Above: Ranger XLT Regular Cab in optional deluxe two-tone paint, Twilight Blue Clearcoat Metallic/Silver Clearcoat Metallic.*

*At left: Ranger XLT SuperCab in Silver Clearcoat Metallic.*

*The deep-dish cast aluminum wheels shown here are included in the Manual Transmission Special Value Package.*

*Some equipment shown on these pages is optional.*

*Ranger XLT comes with a standard 3-passenger cloth split 60/40 bench seat. Or you can order the cloth sport bucket seats with floor console shown above in Medium Grey.*



# THE SUPERCAB ADDS ANOTHER DIMENSION TO RANGER FUN AND VERSATILITY.

The driving enjoyment of a sporty compact. Plus all the cargo-hauling utility of a pickup. What better way to describe the outstanding versatility of the fun-tough Ford Ranger. And what better way to enjoy it than in the Ranger SuperCab.

SuperCab extends the versatility of the Regular Cab model. Cab length increases by 16.7 inches. And there are 22.2 cu. ft. of rear cargo space (18.1 cu. ft. in models with jump seats).

In the SuperCab you have plenty of room for tools, camping or fishing gear — items that you would want to carry inside the cab.

You'll find more than just extra space in this versatile

extended-cab Ranger. In the SuperCab you have 1-1/2 more inches of seat travel for increased leg room. And the seat backs recline for greater comfort.

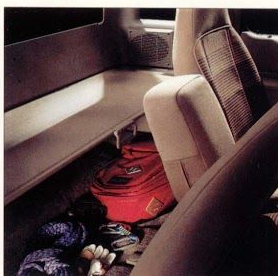
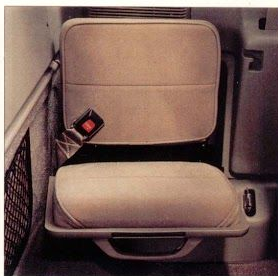
Rear jump seats are available. Lower them for extra seating or fold them up when you need more cargo room. There's also a cargo cover, an exclusive Ford feature, standard in XLT and STX models (see your dealer for date of availability).

What's more, the Custom SuperCab offers the new "Comfort Cab" Package. Included are the cloth 60/40 split bench seat and other items listed on page 15. It's yet another example of Ranger's outstanding value.



Ranger's ergonomic instrument cluster includes fuel, engine temperature, oil pressure and voltmeter gauges. A handy trip odometer, too. Column-mounted controls are also standard.

Some equipment shown on these pages is optional.



Rear jump seats are included in the XLT and STX SuperCabs and optional in the Custom model. And a retractable cargo cover is standard in the XLT and STX (see your dealer for date of availability). No one else offers it.

At right: Ranger XLT SuperCab interior with cloth 60/40 split bench seat in Mocha.













EQUIPPED FOR  
DRIVING FUN,  
AND PRICED TO  
BE AFFORDABLE.  
THE YOUTHFUL  
RANGER SPORT.

The way we have styled and equipped it, the Ranger Sport Regular Cab model delivers plenty of driving fun for the dollar.

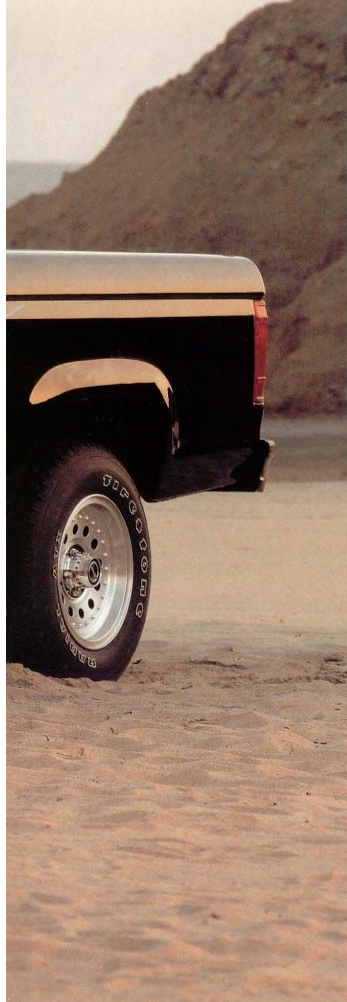
The Ranger Sport Preferred Equipment Package includes a unique tape stripe treatment, plus P215 outline white-letter all-season (4x2) or all-terrain (4x4) radial tires mounted on deep-dish cast aluminum wheels.

Inside, you have 60/40 split bench seating comfort for three, electronic AM/FM stereo radio/cassette system, leather-wrapped steering

wheel, power steering, and a tachometer in the 4x2 model (in the 4x4 also as standard equipment).

You also have ergonomic instruments (full gauges) and controls for operating convenience, computer-controlled rear anti-lock brakes, nitrogen gas-pressurized shocks, and a fuel-efficient 2.3L multi-port fuel-injected I-4 engine.\*

Or power your Ranger Sport with an optional V-6: a multi-port fuel-injected 3.0L (4x2), 2.9L (4x4), or the higher-performance 4.0L.



*At left: Ranger Sport Regular Cab in Raven Black with unique Magenta and Blue sport tape stripe.*

*Some equipment shown on these pages is optional.*

*\*1992 EPA mileage estimates were not available at press time.*

*Above: The optional 3-passenger cloth split bench seat, shown here in Medium Grey, is included in the Ranger Sport Preferred Equipment Package.*



THE DYNAMIC  
RANGER STX.  
STYLED, EQUIPPED  
AND ENGINEERED  
FOR THE ULTIMATE  
IN FORD RANGER  
ENJOYMENT.



Touch Drive is the ultimate in 4-wheeling convenience with push-button controls on the instrument panel — a more convenient design than the floor shifter in other compact 4x4s. Touch Drive lets you shift on the fly from 2WD to 4WD-High and back at normal driving speeds. And the automatic-locking hubs engage instantly. An electromagnetic clutch spins up the front drive system from zero to driving speed in milliseconds.

At right: The Ranger STX interior in Crystal Blue. Power steering, tachometer, AM/FM stereo, and a leather-wrapped steering wheel are among STX's many standard features. The sport cloth bucket seats with console and cup holder (see your dealer for date of availability) and stereo cassette player are included in STX Preferred Equipment Packages.

The Ford Ranger STX. Take one on a test drive and experience the best in Ranger driving enjoyment.

Choose the Regular Cab or the roomier SuperCab. Both come in a sporty 2-wheel-drive model, a lot of fun to drive around town.

And there's the Ranger STX 4-wheeler that takes the 4x2's fun-tough spirit and great versatility a step further. You're as much at home on a city street as on tough off-road trails.

All Ranger 4x4s offer the choice of auto-locking hubs with the exclusive Ford Touch Drive transfer case, or optional manual-locking hubs and 2-speed shifter.

Ranger STX is powered by a responsive 3.0L V-6 (4x2) or a 2.9L V-6 (4x4). For even higher performance, there's the 4.0L V-6. All have computer-controlled, multi-port

electronic fuel injection and a 5-speed manual gearbox (an electronic 4-speed automatic is optional).

The STX suspension is equipped with stabilizer bars and heavy-duty nitrogen gas-pressurized shocks for balanced ride quality and handling control. The tires are P215 14" all-season (4x2) or 15" all-terrain (4x4) outline white-letter radials.

In style, STX is everything you'd expect. Youthful and dynamic, from its fog lamps and unique tape striping to its tachometer, leather-wrapped steering wheel, and the sport bucket seats with console (see your dealer for date of availability).

Make your STX even sportier with the optional Rally Bar Package and the Sport Appearance Package, either one or both available in black or bright alloy.



Above: Ranger STX SuperCab 4x4 in Brilliant Blue Clearcoat Metallic. STX comes with unique tape stripes, fog lamps, and black rear step bumper as standard. Deep-dish cast aluminum wheels (4x2) and sport cast aluminum wheels (4x4) are included in the STX Preferred Equipment Packages.

Some equipment shown on these pages is optional.





At left: The race-prepared Ford Ranger of Manny Esquerro. Rangers have won more HDRA/SCORE off-road competitions than any competitor in their classes, imports included, over the past four years. In racing, we apply the same formula for success that has made Ranger the No. 1-selling compact truck in America. The Best Never Rest.

Note: The specially modified racing vehicles shown are operated by professional drivers in sanctioned competition.



## RANGER 4x2 SPECIFICATIONS

GVW Rating (max.)	4,580 lbs. - Regular Cab; 4,440 lbs. - SuperCab
Frame	Ladder-type
Axles: front	2,580 lbs.
Axles: rear	Std. 2,790 lbs.; Opt. 2,790 lbs. Limited Slip
Computer-selected front coil springs (combined rating @ ground)	1,910 lbs. - Regular Cab; 2,140 lbs. - SuperCab
Computer-selected rear leaf springs (combined rating @ ground)	2,200 lbs. - Regular Cab; 2,550 lbs. - SuperCab
Shock absorbers	Std. gas-pressurized; Opt. heavy-duty gas-pressurized
Front stabilizer bar*	Std. - SuperCab; Opt. - Regular Cab
Rear stabilizer bar	Opt. - Regular Cab and SuperCab
Brakes	Power front discs; power rear drums with anti-lock system
Battery	58 AH maintenance-free - Regular Cab 72 AH maintenance-free - SuperCab (opt. in Regular Cab)
Alternator	95 amps [2.3L I-4, 3.0L V-6, 4.0L V-6]; 60 amps [2.9L V-6]
Fuel capacity	16.3 gals. - Regular Cab 20.0 gals. - SuperCab (opt. in 114" wb Regular Cab)
Nominal box length	6 ft. - 108" wb Regular Cab and 125" wb SuperCab 7 ft. - 114" wb Regular Cab
Steering: Regular Cab*	Manual - std. in "S" and Custom Power - incl. in Sport, XLT and STX; opt in "S" and Custom
Steering: SuperCab	Power
Curb-to-curb turning diameter	36.7 ft. - 108" wb Regular Cab 38.5 ft. - 114" wb Regular Cab 41.6 ft. - 125" wb SuperCab

\* Front stabilizer bar is included on all Ranger models equipped with power steering.

## POWERTeam AVAILABILITY BY TRIM MODEL

4x2 model	Regular Cab				SuperCab			
	"S"	Sport	Custom	XLT	STX	Custom	XLT	STX
2.3L I-4/5-Speed Man.	S	S	S	S	-	S	S	-
2.3L I-4/4-Speed Auto.	-	O	O	O	-	-	-	-
3.0L V-6/5-Speed Man.	-	O	O	O	S	O	O	S
3.0L V-6/4-Speed Auto.	-	O	O	O	O	O	O	O
4.0L V-6/5-Speed Man.	-	O	O	O	O	O	O	O
4.0L V-6/4-Speed Auto.	-	O	O	O	O	O	O	O
<b>4x4 model</b>								
2.3L I-4/5-Speed Man.	S	S	S	S	-	-	-	-
2.9L V-6/5-Speed Man.	-	O	O	O	S	S	S	S
2.9L V-6/4-Speed Auto.	-	O	O	O	O	O	O	O
4.0L V-4/5-Speed Man.	-	O	O	O	O	O	O	O
4.0L V-4/4-Speed Auto.	-	O	O	O	O	O	O	O

## RANGER 4x4 SPECIFICATIONS

GVW Rating (max.)	4,720 lbs. - Regular Cab; 4,840 lbs. - SuperCab
Frame	Ladder-type
Axles: front	2,790 lbs.
Axles: rear	Std. 2,790 lbs.; Opt. 2,790 lbs. Limited Slip
Computer-selected front coil springs (combined rating @ ground)	2,160 lbs. - Regular Cab; 2,340 lbs. - SuperCab
Computer-selected rear leaf springs (combined rating @ ground)	2,570 lbs. - Regular Cab; 2,570 lbs. - SuperCab
Shock absorbers	Heavy-duty gas-pressurized
Stabilizer bars	Std. - front; Opt. - rear
Brakes	Power front discs; power rear drums with anti-lock system
Front hubs/transfer case	Std. automatic locking/Touch Drive 2-speed electric shift Opt. manual locking/2-speed manual shift
Battery	58 AH maintenance-free - Regular Cab 72 AH maintenance-free - SuperCab (opt. in Regular Cab)
Alternator	95 amps [2.3L I-4, 3.0L V-6, 4.0L V-6]; 60 amps [2.9L V-6]
Fuel capacity	16.3 gals. - Regular Cab 20.0 gals. - SuperCab (opt. in 114" wb Regular Cab)
Nominal box length	6 ft. - 108" wb Regular Cab and 125" wb SuperCab 7 ft. - 114" wb Regular Cab
Steering	Power
Curb-to-curb turning diameter (ft.)	37.3 ft. - 108" wb Regular Cab 39.1 ft. - 114" wb Regular Cab 42.4 ft. - 125" wb SuperCab

### 2.3L ENGINE

Type/cylinders:	Gasoline/I-4, 8 plugs
Liters/cubic inches:	2.3/140
Fuel injection:	Electronic multi-port
Bore and stroke:	3.78x3.13
Compression ratio:	9.2:1
Horsepower:	100 @ 4,600 rpm
Torque, lbs./ft.:	133 @ 2,600 rpm

### 3.0L ENGINE (4x2 only)

Type/cylinders:	Gasoline/V-6
Liters/cubic inches:	3.0/182
Fuel injection:	Electronic multi-port
Bore and stroke:	3.50x3.14
Compression ratio:	9.3:1
Horsepower:	145 @ 4,800 rpm*
Torque, lbs./ft.:	170 @ 3,600 rpm*

\*1991 data. See your dealer for 1992 information.

### 2.9L ENGINE (4x4 only)

Type/cylinders:	Gasoline/V-6
Liters/cubic inches:	2.9/179
Fuel injection:	Electronic multi-port
Bore and stroke:	3.66x2.83
Compression ratio:	9.0:1
Horsepower:	140 @ 4,600 rpm
Torque, lbs./ft.:	170 @ 2,600 rpm

### 4.0L ENGINE

Type/cylinders:	Gasoline/V-6
Liters/cubic inches:	4.0/245
Fuel injection:	Electronic multi-port
Bore and stroke:	3.95x3.32
Compression ratio:	9.0:1
Horsepower:	160 @ 4,400 rpm
Torque, lbs./ft.:	225 @ 2,400 rpm





## MAXIMUM TRAILER TOWING WEIGHTS

	Axle Ratio	GCWR Max.	Regular Cab		SuperCab	
			4x2	4x4	4x2	4x4
2.3L EFI I-4/4-Speed Auto.	4.10	6,000	2,700	—	—	—
2.9L EFI V-6/4-Speed Auto.	3.73	7,500	—	3,800	—	3,600
	4.10	8,000	—	4,300	—	4,100
3.0L EFI V-6/4-Speed Auto.	3.45	7,000	3,700	—	3,400	—
	3.73	7,500	4,200	—	3,900	—
4.0L EFI V-6/4-Speed Auto.	3.08	6,000	2,600	—	2,300	—
	3.27	7,500	—	3,800	—	3,500
	3.55	9,500	6,100	—	5,800	—
	3.73	9,500	—	5,800	—	5,500
2.3L EFI I-4/5-Speed Man.	3.73	4,800	1,500	—	1,300	—
	4.10	4,800	—	1,200	—	—
2.9L EFI V-6/5-Speed Man.	3.55	5,000	—	1,400	—	1,300
	3.73	6,000	—	2,400	—	2,100
3.0L EFI V-6/5-Speed Man.	3.45	5,000	1,700	—	1,400	—
	3.73	6,000	2,700	—	2,400	—
4.0L EFI V-6/5-Speed Man.	3.08	5,000	1,600	—	1,400	—
	3.27	6,000	—	2,300	—	2,100
	3.55	6,000	—	2,300	—	2,100
	3.55	7,000	3,600	—	3,400	—
	3.73	7,000	—	3,300	—	3,100

NOTE: Engine/axle ratio combinations shown may not be available in all areas. Your Ford Dealer can supply availability information. All maximum trailer weights shown must be reduced by passenger and cargo weight in the towing vehicle. Also, for towing trailer over 2,000 pounds, the Regular Cab model must be equipped with the payload package #2. The following equipment may also be required: super engine cooling; step bumper or load-carrying hitch for towing trailers under 2,000 pounds; and load-equalizing hitch for towing trailers over 2,000 pounds. For specific information on recommended or required equipment, see your Ford Dealer. Hitches are available through manufacturers other than Ford.

## TIRE AVAILABILITY BY TRIM MODEL

Regular Cab						SuperCab		
4x2 model	"S"	Sport	Custom	XLT	STX	Custom	XLT	STX
P195 BSWx14 all-season	S	—	S	—	—	S	—	—
P215 BSWx14 all-season	—	—	O	O	—	O	O	—
P215 OWLx14 all-season	—	X	O	X	S	O	X	S
4x4 model								
P215 BSWx15 all-season	S	—	S	—	—	S	—	—
P215 OWLx15 all-terrain	—	X	O	X	S	O	X	S

S = Standard. O = Optional. X = Included in Preferred Equipment Package.



## PAYLOAD PACKAGE SELECTOR

Regular Cab	Package No.	Payload	GVWR	Tires (Min.)
4x2 SWB	#1 Std.	1,200 lbs.	4,100 lbs.	P195/70R14SL
4x2 SWB	#2 Opt.	1,620 lbs.	4,580 lbs.	P215/70R14SL
4x2 LWB	#1 Std.	1,200 lbs.	4,180 lbs.	P195/70R14SL
4x2 LWB	#2 Opt.	1,620 lbs.	4,580 lbs.	P215/70R14SL
4x4 SWB	#1 Std.	1,200 lbs.	4,400 lbs.	P215/75R15SL
4x4 SWB	#2 Opt.	1,400 lbs.	4,680 lbs.	P215/75R15SL
4x4 LWB	#2 Opt.	1,400 lbs.	4,720 lbs.	P215/75R15SL
<b>SuperCab</b>				
4x2	#1 Std.	1,260 lbs.	4,440 lbs.	P195/70R14SL
4x4	#1 Std.	1,300 lbs.	4,840 lbs.	P215/75R15SL

SWB = short wheelbase (107.9" Regular Cab), LWB = long wheelbase (113.9" Regular Cab).

Note: Payload is the maximum allowable weight of people, cargo, body and equipment and is reduced by the weight of optional equipment.

## EXTERIOR DIMENSIONS

Wheelbase	Cab Length	Box Length	Overall Length	Overall Width
107.9"	100.2"	76.1"	176.5"	66.8"
113.9"	100.2"	88.2"	188.5"	66.8"
125" SC	116.9"	76.1"	193.7"	66.8"

Load Height at Cargo Floor 4x2/4x4 (Empty)	Front Tread 4x2/4x4	Rear Tread 4x2/4x4	Axle Clearance 4x2/4x4
28.0"/33.0"	55.3"/56.7"	54.1"/55.4"	6.6"/6.8"
27.9"/33.1"	55.3"/56.7"	54.1"/55.4"	6.6"/6.8"
27.3"/31.3"	55.3"/56.7"	54.1"/55.4"	6.6"/6.7"

## INTERIOR DIMENSIONS

Passenger Compartment	Regular Cab	SuperCab
Head room	39.2"	39.4"
Shoulder room	54.6"	54.6"
Hip room	52.7"	52.7"
leg room (max.)	42.4"	43.4"
Space behind seat (cu. ft.)	—	18.1*
<b>Cargo Compartment</b>		
Box length at floor		
Short wheelbase	72.3"	—
Long wheelbase	84.2"	72.3"
Maximum inside width at floor	51.9"	51.9"
Pickup box depth	16.5"	16.5"
Cargo volume — cu. ft. (no allowance for wheelhouses)		
Short wheelbase	37.4"	—
Long wheelbase	43.5"	37.4"

\* 18.1 cu. ft. with rear jump seats; 22.2 cu. ft. without rear jump seats.



# EQUIP YOUR NEW RANGER PICKUP TO MATCH YOUR INDIVIDUAL STYLE.

There are a lot of ways to enjoy driving a Ford Ranger. It's just a matter of choosing and equipping the Ranger that matches your style.

You have a variety of trim models, in Regular Cab and SuperCab styles, each with a list of standard features and a Preferred Equipment

Package. These packages, (see page 15) make it easier to order a Ranger equipped the way you want it.

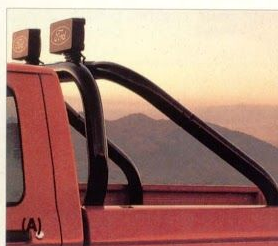
Shown below are a few of the options that let you personalize your Ranger. Some of these items are already included in select Preferred Equipment Packages.

## PRODUCT CHANGES

Following publication of the catalog, certain changes in standard equipment, options, prices and the like, or product delays, may have occurred which would not be included in these pages. Your Ford Dealer is your best source for up-to-date information.

Ford Division reserves the right to change product specifications at any time without incurring obligations.

- (A) Rally bar package (rally bar is not intended for occupant safety).  
(B) From left to right: sport cast aluminum wheels and deep-dish cast aluminum wheels.  
(C) Electronic AM/FM stereo radio with cassette player and digital clock.  
(D) Sliding rear window.



## COLORS AND TRIMS — "S", Custom, and XLT

Exterior Paint Colors	Interior Trim Colors			
	Crystal Blue	Scarlet Red	Medium Grey	Mocha
Raven Black		■	■	■
Oxford White	■	■	■	
Cabernet Red		■	■	■
Bright Red		■	■	■
Mocha				■
Medium Platinum Clearcoat		■	■	
Cayman Green Clearcoat			■	■
Wild Strawberry Clearcoat Metallic		■	■	■
Bright Calypso Green Clearcoat Metallic			■	
Mocha Frost Clearcoat Metallic				■
Medium Mocha Clearcoat Metallic				■
Twilight Blue Clearcoat Metallic	■			■*
Brilliant Blue Clearcoat Metallic	■		■	
Silver Clearcoat Metallic	■	■	■	

\* XLT only. NOTE: See your dealer for optional Deluxe Two-Tone paint colors for Ranger XLT.

## MAJOR STANDARD FEATURES

### Exterior

- Halogen headlamps
- Black grille with black surround molding (chrome with chrome surround on XLT)
- Black aerodynamic wraparound front bumper with rub strip (chrome with rub strip on XLT)
- Black rear step bumper (Sport, Custom, STX); chrome with rub strip (XLT Preferred Equipment Package)
- Black foldaway mirrors
- Tinted glass
- Pickup box stake pockets, tie-down holes, two-tier loading feature, and easily removable tailgate

### Interior

- Ergonomic instrument cluster with fuel, temperature, oil pressure and voltmeter gauges; trip odometer
- Stalk-mounted controls for turn signals, constant speed and interval windshield wipers/washer, high-beams, and flash-to-pass feature
- Steering wheel: black (S, Custom, XLT); leather-wrapped (Sport, STX)
- Door trim: color-keyed with vinyl padded armrest and black door handles (S, Sport, Custom); color-keyed cloth/vinyl with lower carpeting and map pockets (XLT, STX)
- Inside cargo cover (XLT, STX SuperCab) — see your dealer for date of availability

### Technical

- 5-speed manual overdrive transmission
- Multi-port electronic fuel injection with EEC-IV computer controls
- Power front disc brakes; rear drum brakes with anti-lock system
- Twin-Beam (4x2) and Twin-Traction Beam (4x4) independent front suspensions; nitrogen gaspressurized shock absorbers
- Automatic locking hubs with Touch Drive electric shift transfer case (4x4)

## COLORS AND TRIMS — Sport and STX

Exterior Paint Colors	Interior Trim Colors			
	Crystal Blue	Scarlet Red	Medium Grey	Mocha*
Raven Black		■*	■	■*
Oxford White	■	■*	■	
Cabernet Red*		■*	■*	■*
Bright Red		■	■	■*
Bright Aqua			■	
Medium Platinum Clearcoat		■*	■	
Cayman Green Clearcoat			■	
Wild Strawberry Clearcoat Metallic*		■*	■*	
Bright Calypso Green Clearcoat Metallic			■	
Twilight Blue Clearcoat Metallic	■		■	
Brilliant Blue Clearcoat Metallic	■*		■	
Silver Clearcoat Metallic	■	■*	■	

\* Not available on Sport model.

NOTE: See your dealer for available Sport Tape Stripe colors and combinations.



# RANGER PREFERRED EQUIPMENT PACKAGES AND OPTIONS

Note: Package content is subject to change.  
X = Included in package S = Standard O = Optional

	Regular Cab 4x2/4x4					SuperCab 4x2/4x4		
	"S" 859A	Sport 860A	Custom 861A	XLT 864A	STX 865A	Custom 850A	XLT 853A	STX 854A
<b>Appearance/Comfort/Convenience</b>								
"S" model content (deletes rear step bumper, cargo light, AM radio)	X							
Spare tire, limited service (4x2 only with Sport)	X	X						
Air conditioning	O	O	O	O	O	O	O	O
Power steering — 4x2 model	O	X	O	X	S	S	S	S
Power steering — 4x4 model	S	S	S	S	S	S	S	S
Tachometer — 4x2 model		X	O	O	S	O	O	S
Tachometer — 4x4 model	S	S	S	S	S	S	S	S
Power windows/locks (with V-6 engine only)		O		O	O		O	O
Speed control/tilt steering wheel		O	O	O	O	O	O	X
Sliding rear window		O	O	X	O	O	X	O
Pivoting quarter windows						O	O	O
Floor mat in place of carpet				O			O	
Black rear step bumper	O	S	S		S	S		S
Chrome rear step bumper				X			X	
Fog lamps		O		O	S		O	S
Bright low-mount swingaway mirrors			O	O	O	O	O	O
Bodyside protection moldings			O	O		O	O	
"Comfort Cab" Package: color-keyed carpeting, high series door trim panels, cloth 60/40 split bench seat, deluxe wheel trim, and P215/70R14SL BSW all-season tires (4x2)						O		
Sport trim package: carpeted sport floor mats, black leather-wrapped steering wheel, and sport tape stripe		X						
Rally bar package: tubular rear bumper, rally bar (not intended for occupant safety) and off-road lights		O	O	O	O	O	O	O
Black:								
Bright:			O	O	O	O	O	O
Sport appearance package: tubular rear bumper, brush/grille guards and fog lights		O	O	O	O	O	O	O
Black:								
Bright:			O	O	O	O	O	O
Lower accent tape stripe				X			X	
Deluxe two-tone paint				O			O	
<b>Seating</b>								
Vinyl bench	S	S	S					
60/40 knitted vinyl split bench		O		O	O	S	O	
60/40 cloth split bench (may be deleted from Sport)		X	O	S	O	O	S	O
Cloth captain's chairs with floor console		O			S	O	O	S
Cloth sport bucket seats with floor console (may be deleted from STX)		O		O	X		O	X
Rear jump seats						O	X	X
<b>Stereo Systems</b>								
Electronic AM with digital clock	O	S	S	S		S	S	
Electronic AM/FM stereo with digital clock		O	O	O	S	O	O	S
Electronic AM/FM stereo with cassette player/digital clock		X	O	X	X	O	X	X
Radio credit option (deletes standard AM radio)			O			O		
<b>Performance</b>								
Engines/Transmissions (See Powertrain Availability by Trim Model on page 12)								
Tires (See Tire Availability by Trim Model on page 13)								
Super engine cooling		O	O	O	O	O	O	O
Limited slip performance rear axle (with V-6 engine only)		O	O	O	O	O	O	O
High-capacity 20.0-gallon fuel tank — 114" wheelbase only		O	O	O	O			
Handling package: front and rear stabilizer bars (front stabilizer bar standard on all Regular Cabs with power steering and SuperCabs) and heavy duty shock absorbers — 4x2 model only		O	O	O	S	O	O	S
Manual locking hubs — 4x4 only	O	O	O	O	O	O	O	O
Payload package — 4x2 only (See page 13 for contents)			O	O	O			
<b>Wheel Trim</b>								
Deluxe wheel trim			O	S		O	S	
Deepdish cast aluminum wheels — 4x2 model		X	O	O	X	O	O	X
Deepdish cast aluminum wheels — 4x4 model		X	O	O	O	O	O	O
Sport cast aluminum wheels — 4x4 only					X			X
<b>Manual Transmission Special Value Package:</b>								
Deepdish cast aluminum wheels				X			X	



#### 6-YEAR/100,000-MILE CORROSION PROTECTION

Corrosion warranty coverage for outer body panel rust-through is 6 years or 100,000 miles, whichever comes first. See your Ford Dealer for a copy of this limited warranty.



Optional Ford Extended Service Plans cover major components on new Ford cars and light trucks for longer than the vehicle's basic warranty. Your Ford Dealer has full details.

#### MOTORCRAFT REPLACEMENT PARTS

Genuine Ford and Motorcraft original equipment replacement parts meet the same high standards as those installed in production.



"Tread Lightly" is an educational program designed to increase public awareness of land-use regulations and responsibilities in our

nation's wilderness areas. Ford joins the U.S. Bureau of Land Management in encouraging you to help preserve our national forests and other public and private lands by "treading lightly."



Ford Credit's Red Carpet Lease® program makes driving a new Ford even more pleasurable. With it, qualified lessees can drive a new car or truck every few years, and can generally select a more expensive vehicle (or one with more options) at a lower monthly payment. See your dealer today for details on Red Carpet Lease.

#### OPTIONS AVAILABILITY

Options shown or described in this catalog are available at extra cost and may be offered only in combination with other options or subject to additional ordering requirements or limitations.

