



**INTRODUCING
THE
1983 FORD
RANGER**

THE 1983 FORD RANGER.

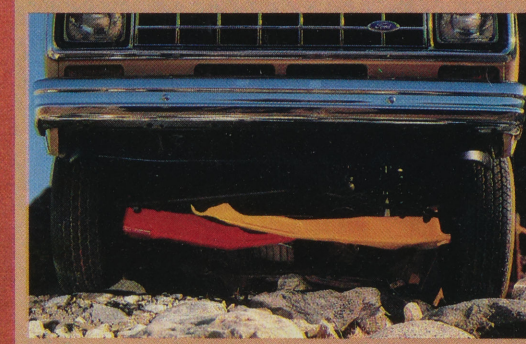
BUILT LIKE THE BIG ONES, SAVES LIKE THE SMALL ONES.

Ranger is here! It's the new-size, high-mileage pickup from Ford. Compact on the outside. Surprisingly spacious inside. The standard bench seat offers room for three. And Ranger is ready for the job at hand with proven Ford-tough design features and impressive fuel efficiency.

The standard powerplant is the new 2.0 liter truck engine which, combined with the 4-speed manual transmission, makes Ranger one economical truck: 40 est. hwy., 27 EPA est. mpg.* And a new computer-controlled 2.3 liter truck engine is also available.† Test drive Ford Ranger soon.

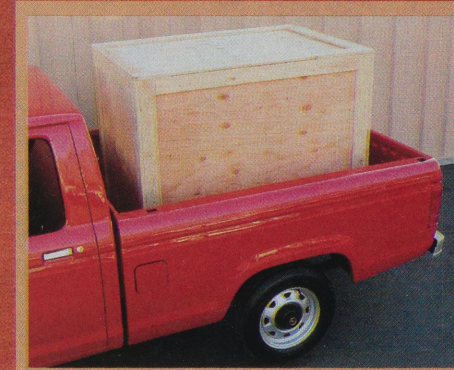
*With no cost fuel saver option. Projected Ford Division estimates for comparison. Your mileage may differ depending on speed, trip length and weather. Actual highway mileage will probably be lower. See your Ford Dealer for his EPA Gas Mileage Guide.

†Computer-control feature not available in high altitude areas.



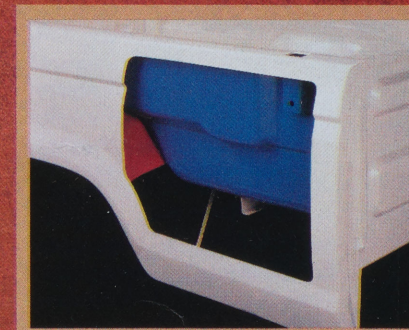
TWIN-I-BEAM FRONT SUSPENSION

Ford's famous Twin-I-Beam front suspension provides each front wheel its own steel I-beam and big coil spring to step over bumps independently.



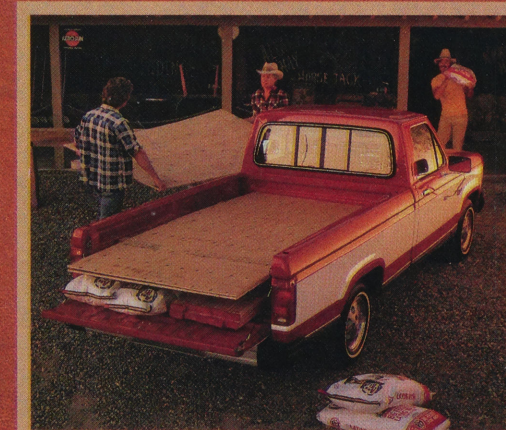
PAYLOAD

Ranger is built with a tough ladder-type frame. Optional payload is over 1600 pounds!



DOUBLE-WALL CONSTRUCTION

Rugged double-wall construction is used in the roof, hood, doors, pickup box sides and tailgate.



ROOMY PICKUP BOX

You can carry up to 500 pounds of 4' by 8' panels flat when two 2" by 6" boards are laid in Ranger's material support pockets.

FORD **RANGER**

THE NEW-SIZE HIGH-MILEAGE PICKUP.

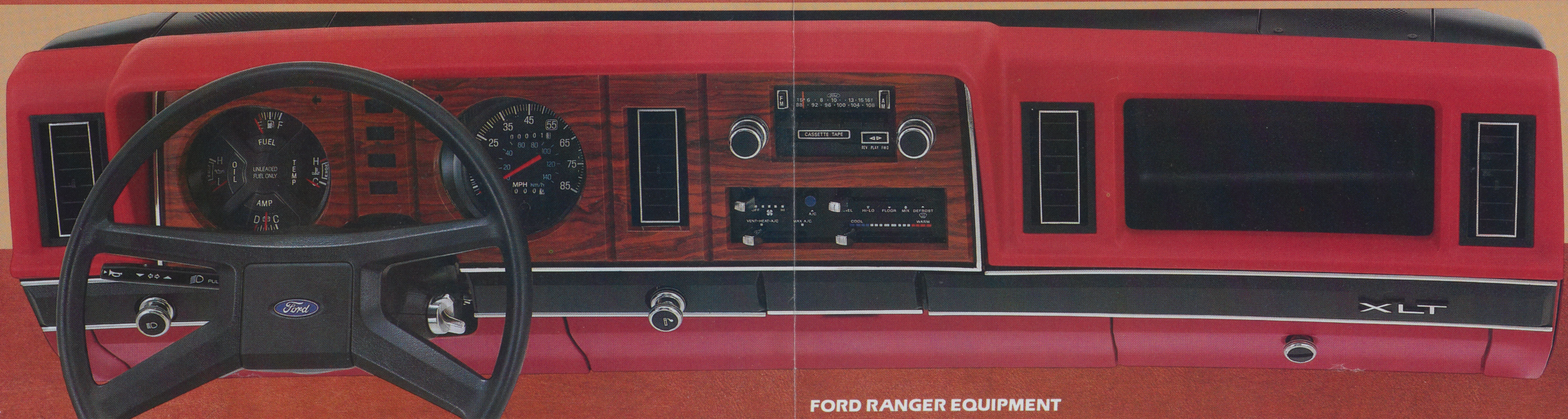
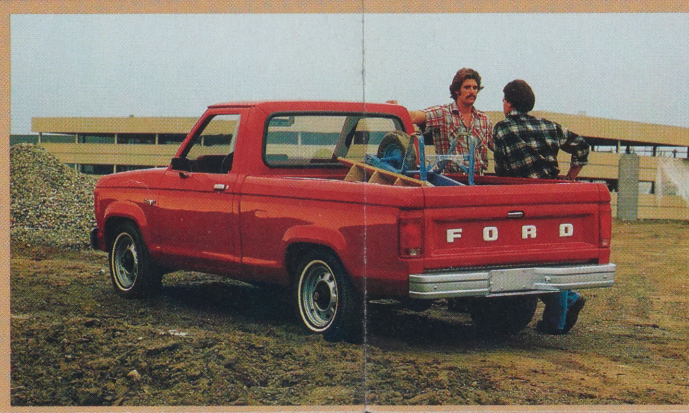
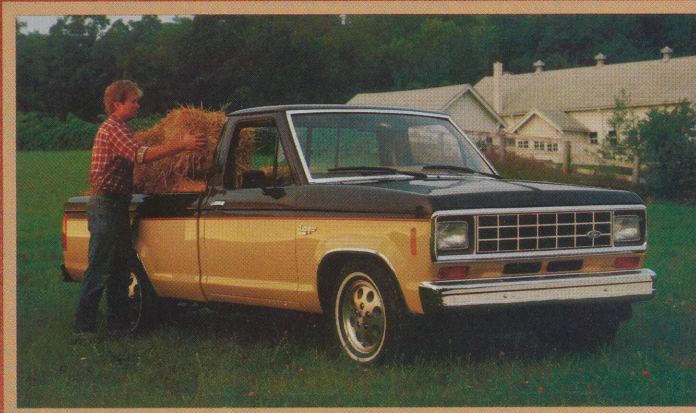


Ranger XLT

Ranger XL

Standard Ranger

Ranger XLS



Ranger XLT Interior



INTERIOR ROOM, COMFORT AND STYLE LIKE THE BIG ONES

Ranger's interior roominess belies its trim exterior dimensions. "People" space gets high priority in the Ranger cab. So does comfort. The standard bench seat accommodates three, with a full 55.6" in shoulder room and 55.0" in hip room. Full foam seats feature Ford's Flex-o-lator design and can be adjusted fully 5 1/2" forward or back. Ranger's stylish instrument panel puts controls in easy reach — many are stalk mounted. Ranger's built like the big ones **inside**, too!

FORD RANGER EQUIPMENT

		108" WB	114" WB
Payload (Maximum)	Std.	1210 lb.	1200 lb.
	Opt.	1620 lb.	1605 lb.
Maximum GVWR	Std.	4200 lb.	4220 lb.
Frame	Std.	Ladder-type	
Axle, Front	Std.	Twin-I-Beam 2200 lb.	
Axle, Rear	Std.	2200 lb.	
	Opt.	Traction-Lok 2700 lb.	
Brakes	Std.	Manual front disc/rear drum	
	Opt.	Power*	
Clutch Diameter	Std.	9 in.	
Clutch Housing	Std.	Magnesium	
Battery (amp.-hr.)	Std.	54 (maintenance free)	
	Opt.	63 (maintenance free)	
Alternator (amp.)	Std.	40	
Engine (displacement)	Std.	2.0 liters	
	Opt.	2.3 liters**	
Fuel Tank Capacity	Std.	15.2 gal.	17.0 gal.
	Opt.	13.0 gal. additional cap.	
Pickup Box	Std.	Double-wall sides & tailgate, all-welded constr.	
Shock Absorbers, Front and Rear	Std.	Dual acting telescopic (1 in.)	
	Opt.	Heavy Duty	
Springs, Front ‡	Std.	1851 lb.	
Springs, Rear ‡	Std.	2012 lb.	
Steering	Std.	Manual	
	Opt.	Power†	
Transmission	Std.	4-Speed manual	
	Opt.	Automatic†	
Wheels: Type/Rim	Std.	Argent styled steel, 5-hole, 14 x 5.0††	
	Opt.	(4) cast aluminum, 14 x 6.0	
	Opt.	(5) white sport, 14 x 6.0	
Tires: glass-belted	Std.	(4) P185/75R-14SL (Includes limited-service spare)	
	Opt.	Both glass and steel-belted radials in sizes to match GVWR requirements. Use adequate tires for type of service. Consult your Ford Dealer.	

*Available with Payload Package #1 only. Standard with Payload Package #2. **Required in California. † With 2.3 liter engine only. †† 14 x 5.5 With Payload Package #2 and P205/75R14 tires. ‡ All springs computer selected.



THE 1983 FORD RANGER.

FORD-PAID REPAIR PROGRAMS AFTER THE WARRANTY PERIOD

Sometimes Ford offers adjustment programs to pay all or part of the cost of certain repairs. These programs are intended to assist owners and are in addition to the warranty or to required recalls. Ask Ford or your dealer about such programs relating to your Ford or Lincoln-Mercury vehicle.

To get copies of any adjustment program for your vehicle or the vehicle of interest to you:

Call Ford toll-free at 1-800-241-3673.
Alaska and Hawaii call 1-800-243-3711,
and in Georgia, call 1-800-282-0959.

Or write Ford at:

Ford Customer Information System
Post Office Box 95427
Atlanta, Georgia 30347.

We'll need your name and address; year, make and model vehicle, as well as engine size; and whether you have a manual or automatic transmission.

Specifications, descriptions and illustrative material contained herein were as accurate as known at the time this publication was approved for printing. Ford Division reserves the right to discontinue models or options at any time or change specifications and materials, equipment or design without notice and without incurring obligation. All options and accessories illustrated or referred to as optional or available in this publication are at extra cost. Some options are required in combination with other options. For the price of the model with the equipment you desire or verification of specifications contained herein, see your Ford Dealer.

TECHNICAL SERVICE BULLETINS

All vehicles need repairs during their lifetime. Sometimes Ford Issues Technical Service Bulletins (TSBs) and easy-to-read explanations describing unusual engine or transmission conditions which may lead to costly repairs, the recommended repairs, and new repair procedures. Often a repair now can prevent a more serious repair later. Ask Ford or your dealer for any such TSBs and explanations relating to your Ford or Lincoln-Mercury vehicle.

To get copies of these Technical Service Bulletins and explanations for your vehicle or the vehicle of interest to you:

Call Ford toll-free at 1-800-241-3673.
Alaska and Hawaii call 1-800-243-3711,
and in Georgia, call 1-800-282-0959.

Or write Ford at:

Ford Customer Information System
Post Office Box 95427
Atlanta, Georgia 30347.

We'll need your name and address; year, make and model vehicle, as well as engine size; and whether you have a manual or automatic transmission.

FORD

FORD DIVISION

